



VIVOSUN

Made in China

AeroStream H05

User Manual



VIVOSUN

Welcome to **VIVOSUN**

Thank you for choosing Vivosun! We are committed to product quality and friendly customer service. If you have any questions or suggestions, please don't hesitate to contact us.

Love what you grow™

Overview



Applicable Products:

SKU

AeroStream Intelligent Environmental Humidifier H05

VSE-ASH05

AeroStream Intelligent Environmental Humidifier H05

VSE-ASH05-EU

AeroStream Intelligent Environmental Humidifier H05

VSE-ASH05-UK

AeroStream Intelligent Environmental Humidifier H05

VSE-ASH05-AU

Contents

Safety Information	3
Key Features	4
Product Contents	5
Specifications	6
Installation	7
Control Panel	8
Operating Modes	13
Other Settings	17
Wi-Fi Configuration	19
Maintenance	21
Complete Your Setup	24
Warranty	27
FCC Warning	28
ISED Statement	29

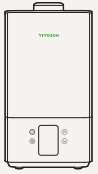
Safety Information

Please read the following instructions carefully before using this device. Failure to observe these safety instructions may result in injury and will release Vivosun of all liability and void all product warranties.

1. Familiarize yourself with all instructions before proceeding with the installation and operation of this product.
2. Ensure that your power source meets the electrical requirements specified for this product.
3. Do not dismantle, attempt to repair or adjust the unit without authorization, as this will invalidate the product's warranty.
4. Use ONLY distilled water, avoiding pouring any water into the central pipe in order to maintain proper functionality of the device.
5. Always turn off and unplug the device before installing, cleaning, or moving. Unplug the device from the power outlet when not in use.
6. Do not touch any components in the water tank, or the water itself, with any part of your body while the device is operating.
7. Do not operate the device without water. Doing so may damage the unit.
8. Do not direct the mist outlet towards electrical appliances, such as clip-on fans, lights, or in-line fans.
9. Do not cover the power cord with any rugs or other fabric materials.
10. When cleaning, do not allow water to flow or splash into the interior of the unit to avoid damaging any internal components.
11. Do not place this product in potentially hazardous environments such as flammable, explosive, electrical, or chemical-laden atmospheres.
12. Place the device on a flat, sturdy surface to keep it stable and prevent tilting and water spillage.
13. Keep the device away from heat sources such as stoves and direct sunlight.
14. Place the device in a room-temperature environment to avoid damage from cold temperatures.
15. Keep the device vout of reach of children.

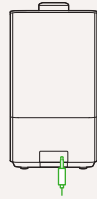


Key Features



User-friendly Design

Its opaque black water tank, ergonomic design, and top-fill feature make it versatile for various uses.



Precise Readings

Compatible with External temperature and humidity probes for precise, targeted environmental readings.



Versatility

Equipped with a range of accessories to suit different usage scenarios.



Phantom Mode

Turn off the screen while operating to prevent light pollution.



Low Water Level Alert

Real time alerts to ensure uninterrupted operation

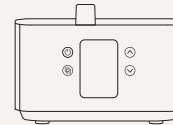
Product Contents

H05

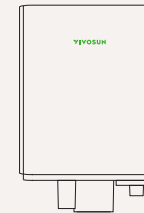


x7 pieces

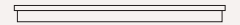
Bottom Module
x 1 pc



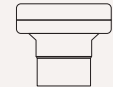
Water Tank
x 1 pc



Top Cover
x 1 pc



Mist Outlet
x 1 pc



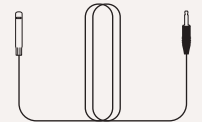
Flexible Hose
x 1 pc



Cleaning Brush
x 1 pc



Temperature &
Humidity Sensor 3m
x 1 pc

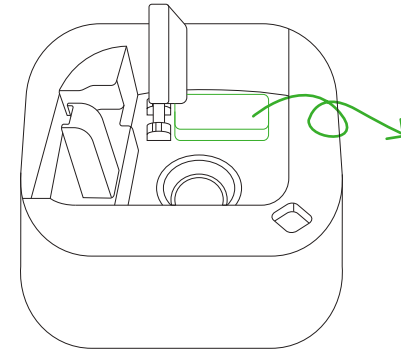


Specifications

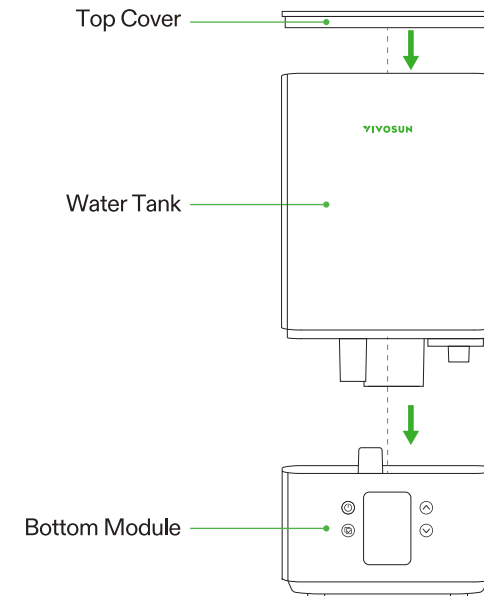
Dimensions	7.4" x 7.4" x 13.9" 188 x 188 x 352 mm
Net/Gross Weight	3.42lbs/3.97lbs 1.55kg/1.8kg
Water Tank Capacity	1.32 gal (5L)
Max Humidity Output Rate	8.45 fl oz/h (250 ml/h)
Voltage	100 – 240V AC
Frequency	50/60Hz
Wattage	28W
Noise Level	≤ 35dB
Operating Temperature Range	41°F – 122°F (5°C – 50°C)
Operating Humidity Range	20% – 99% RH

Installation

STEP 1 Please remove the AeroStream from its packaging, take off the protective bag, and ensure that the protective foam is removed from the bottom module.



STEP 2 Assemble the top cover, water tank, and bottom module.

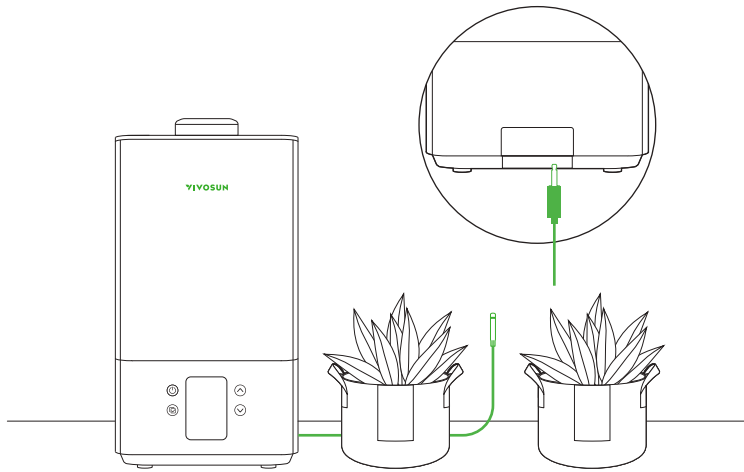


Installation

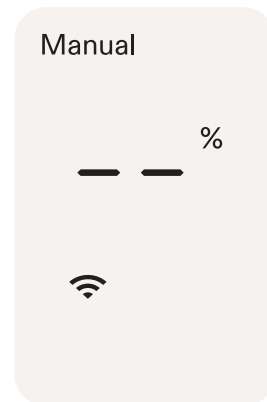
STEP 3 Insert the temperature and humidity probe into the 2.5 mm jack input located to the right of the power cord.

Point the probe at the desired area and secure it in place.

Tip: When inserting the jack, listen out for a distinct clicking noise. This sound confirms that the jack is properly and securely locked into place.



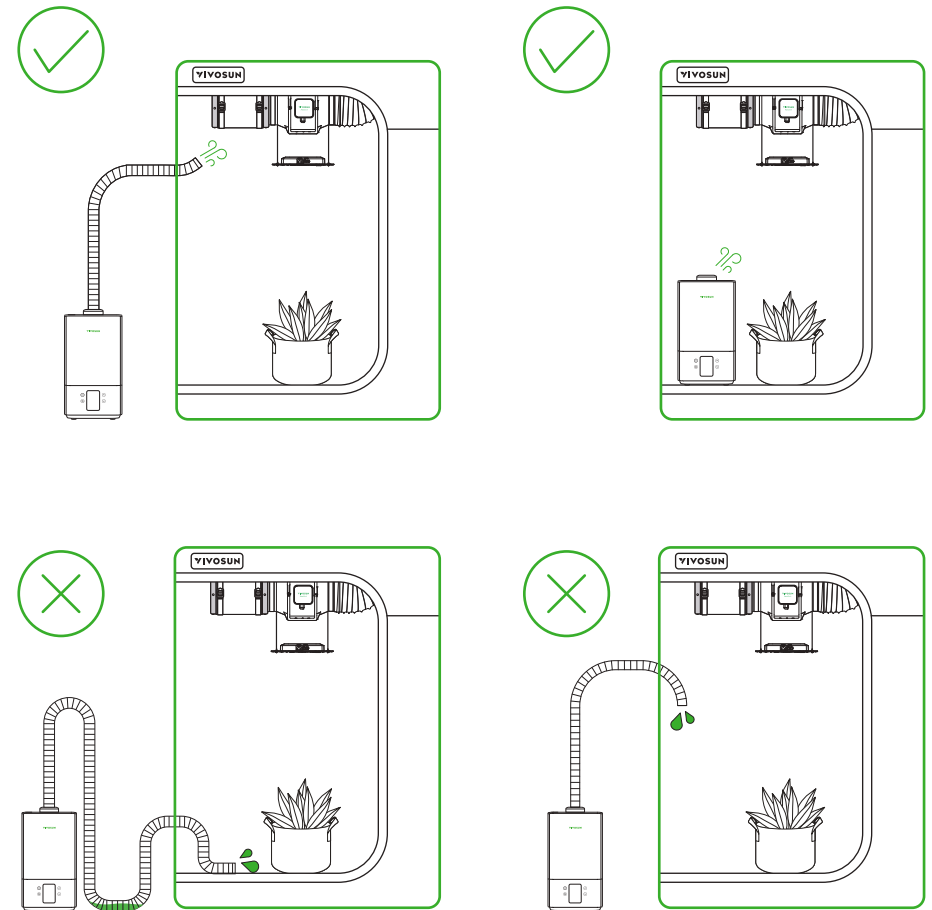
When the temperature and humidity probe is not connected, the screen will display "--".



Installation

STEP 4 Depending on the specific scenario, attach either the Mist Outlet or the Flexible Hose. When using the flexible hose, please note the following:

1. Avoid creating U-bends in the hose, as this may cause water accumulation, leading to spillage or obstructions.
2. The mist outlet must always be pointed upwards.
3. Dry the hose every time after use.

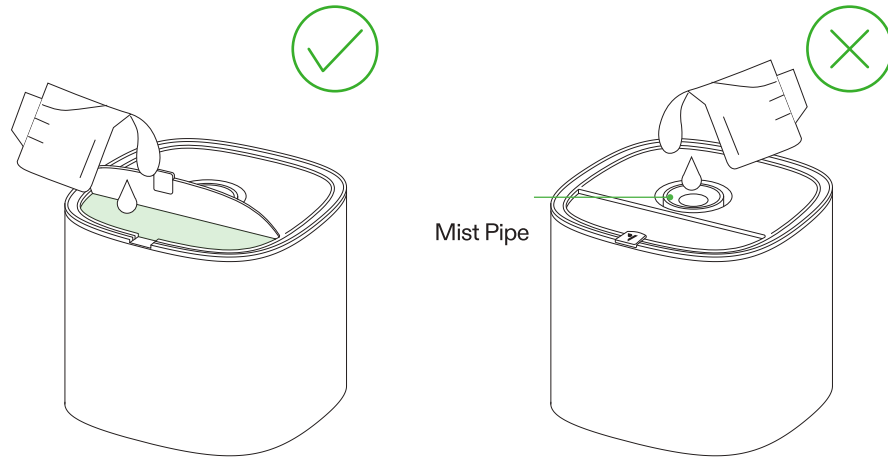


Installation

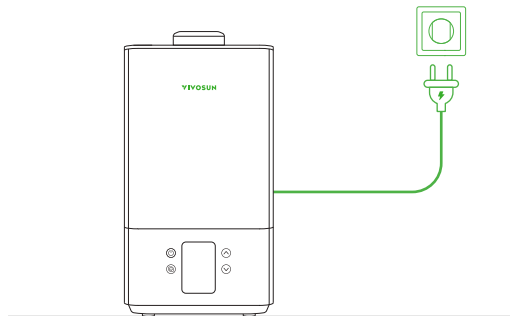
STEP 5 Slowly fill the water tank, paying close attention to the water level to avoid overflow and spillages.

Caution: DO NOT fill the water tank via the mist pipe.

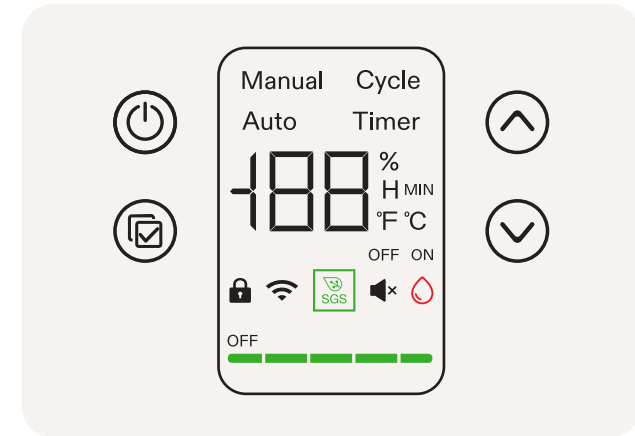
Note: For optimal performance, use DISTILLED WATER ONLY. Clean and maintain the AeroStream on a weekly basis.



STEP 6 Plug in the power cord and enjoy your AeroStream.



Control Panel



On/Off Button

Press to turn On.

Press and hold for 3 seconds to turn Off.



Menu/Confirm Button

Press and hold to select modes. Switch between Manual, Cycle, Auto and Timer and press the Menu Button again to confirm.



Up Button

Press to increase the value of the current setting (Mist Level, Time, etc.).



Down Button

Press to decrease the value of the current setting (Mist Level, Time, etc.).

Control Panel

1. Mist Level

Current mist level.

2. Operating Modes

Manual, Cycle, Auto, Timer.

3. Probe Reading

Alternately displays the current humidity and temperature.

Displays remaining time in Cycle and Timer mode.

4. Status Icons

Displays the setting status, including (cloud) lock, Wi-Fi, SGS connectivity and mute.

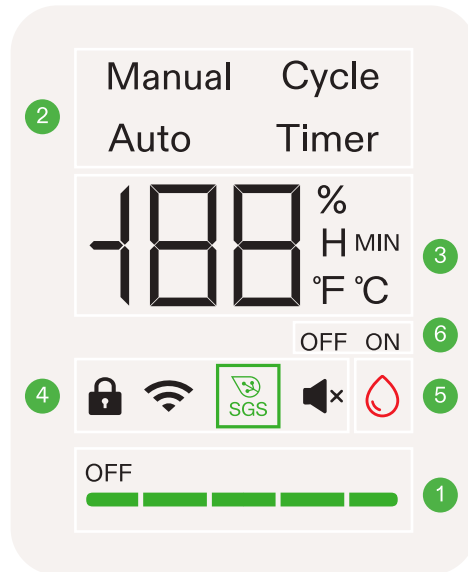
- No Wi-Fi icon indicates the AeroStream is offline
- Wi-Fi icon will flash when searching and connecting to a network.

6. Operational Status

OFF indicates the device is paused.

ON indicates the device is running.

Operation duration is displayed when setting parameters in Cycle and Timer modes.



5. Water Level Icon

Displays the water level status of the device.

When the water level is low, the icon lights up.

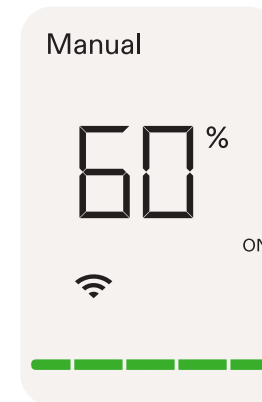
Operating Modes

Manual Mode:

The device operates based on the mist level set in Manual Mode.

To enter Mode Selection, press and hold the Menu button. Use the Up or Down buttons to select Manual Mode, then press the Menu button again to confirm. Adjust the mist level using the Up and Down buttons, and press the Menu button once more to activate Manual Mode.

In this mode, the screen will alternate between displaying the mist level, current humidity, and temperature.



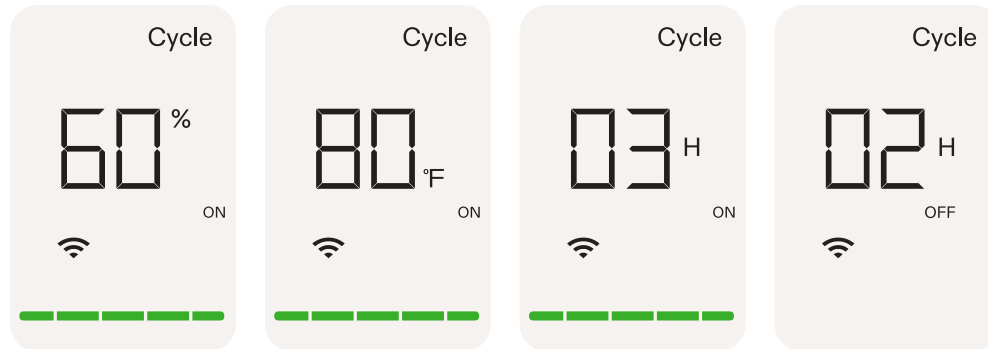
Operating Modes

Cycle Mode:

The device will cycle and run continuously based on the set mist level and run/pause intervals.

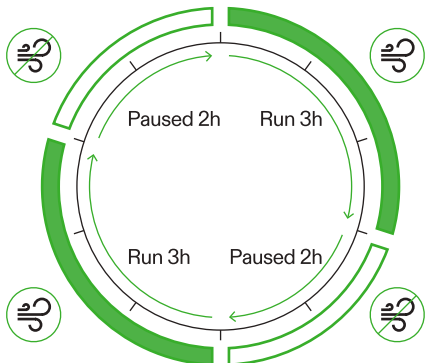
To enter Mode Selection, press and hold the Menu button. Use the Up or Down buttons to select Cycle Mode, then press the Menu button to confirm. Set the operating (On) and rest (Off) durations using the Up/Down buttons, and press the Menu button to confirm. Next, adjust the mist level with the Up/Down buttons, and press the Menu button to activate Cycle Mode.

In this mode, the screen will alternate between displaying the mist level, current humidity, temperature, and remaining run/pause time.



* 03H ON: Under this configuration, the device will operate for 3 hours.

* 02H OFF: Under this configuration, the device will pause for 2 hours.



* The device only displays the duration setting accurate to the hour and rounds up to the nearest whole number. For precise minute settings, please refer to the Vivosun app.

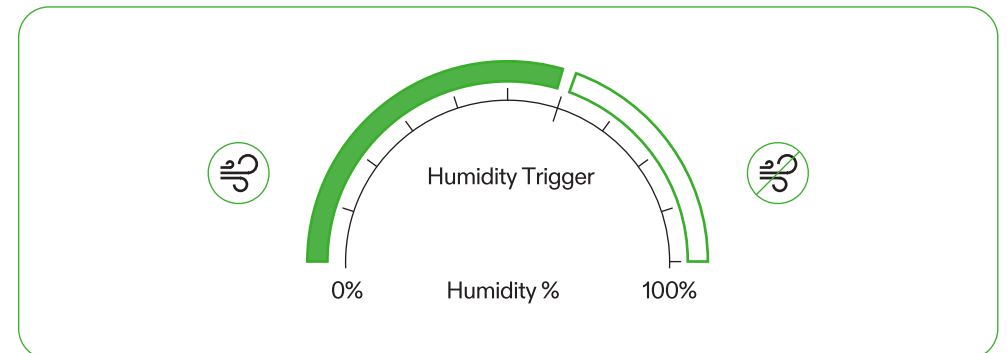
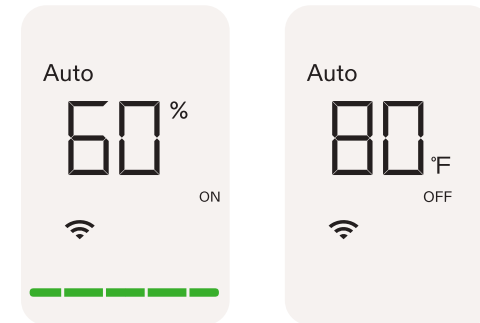
Operating Modes

Auto Mode:

The device operates based on the set mist level and humidity threshold (Low Humidity Trigger). When the humidity drops below the threshold, the humidifier will start; when the humidity rises above it, the humidifier will stop.

To enter Mode Selection, press and hold the Menu button. Use the Up/Down buttons to select Auto Mode, then press the Menu button to confirm. Set the target humidity with the Up/Down buttons and press Menu to confirm. Next, adjust the mist level and press Menu again to activate Auto Mode.

In this mode, the screen will alternate between displaying the mist level, current humidity, temperature, and operating status.



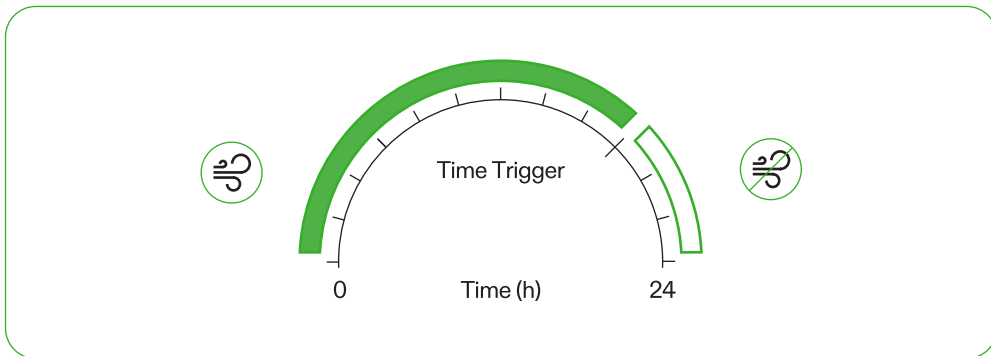
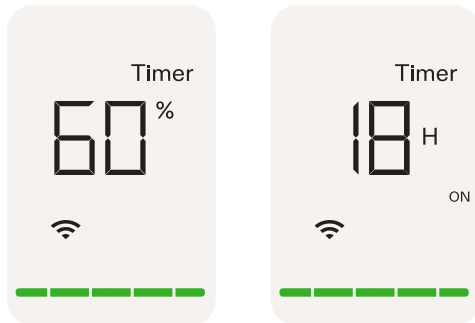
Operating Modes

Timer Mode:

The device will run based on the set mist level and operating time. Once the timer ends, the device will stop.

To enter Mode Selection, press and hold the Menu button. Use the Up/Down buttons to select Timer Mode, then press the Menu button to confirm. Set the desired operating duration with the Up/Down buttons, and press Menu to confirm. Next, adjust the mist level and press Menu again to activate Timer Mode.

In this mode, the screen will alternate between displaying the mist level, current humidity, temperature, and remaining operating time.



* The device only displays the duration setting accurate to the hour and rounds up to the nearest whole number. For precise minute settings, please refer to the Vivosun app.

Other Settings

Function	Operation
Switch Temp Unit	Press and hold the Up button to switch between °C and °F.
Mute Device	Press and hold the Down button to mute/unmute.
Device Lock	Press and hold the On/Off and Up buttons for 3 seconds to lock or unlock the device. Note: When the device is locked, settings cannot be adjusted.
Phantom Mode (Hide Screen)	Press and hold the On/Off and Up buttons for 3 seconds to first lock the device. Then press the On/Off button again to enter Phantom Mode (hide the screen). Press any button to light up the screen again.
Exit Recipe	Press and hold the Menu button for 3 seconds to exit a Recipe while a Recipe is running.
Screen Auto-Off	Set screen Auto-Off via Vivosun App
Factory Reset	Press and hold the On/Off and Menu buttons for 3 seconds to reset the device to factory settings.

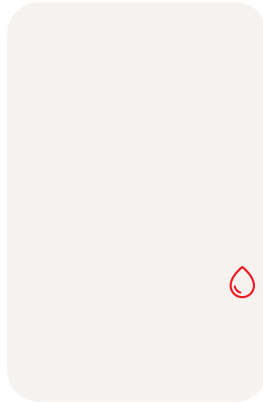
Other Settings

Low Water Level Alert

This alert will display when the water level is low, and the device will pause operation until it is refilled. If connected to the Vivosun App, you will receive a low water level push notification.

To resume operation, refill the water and press the On/Off button.

The alert icon will flash when any button is pressed.



Wi-Fi Configuration

Connect AeroStream to Vivosun App

Step 1: Download Vivosun App

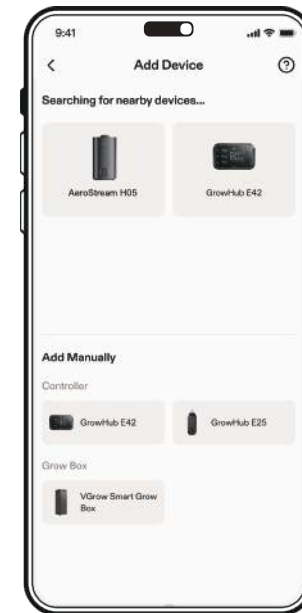
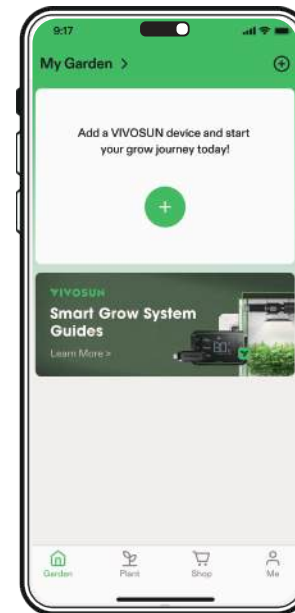
Search "Vivosun" in the Apple App Store or in the Google Play Store to download the Vivosun App.



Step 2. Add AeroStream

Tap "+" or ⊕ to add AeroStream. When connecting to the Vivosun app, 📶 will flash on the control panel.

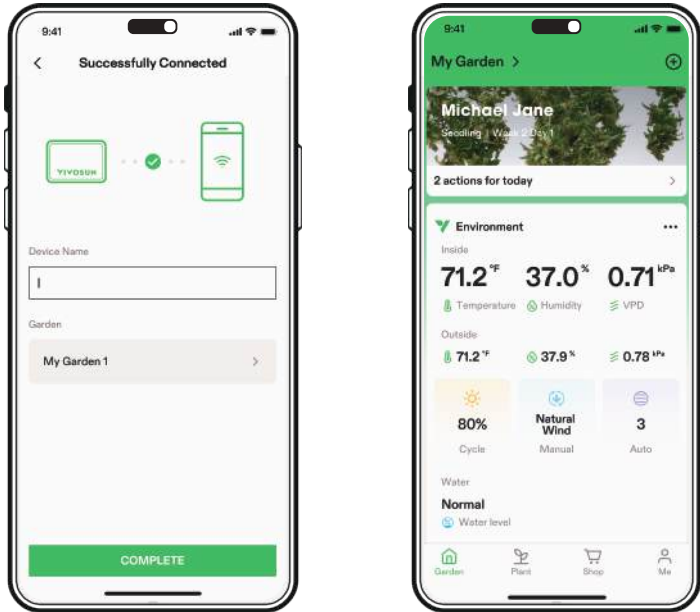
Note: Make sure you have a 2.4G Wi-Fi connection, and that Bluetooth is enabled on your phone.



Wi-Fi Configuration

Step 3. Name Device

After connecting successfully, you can rename your device.

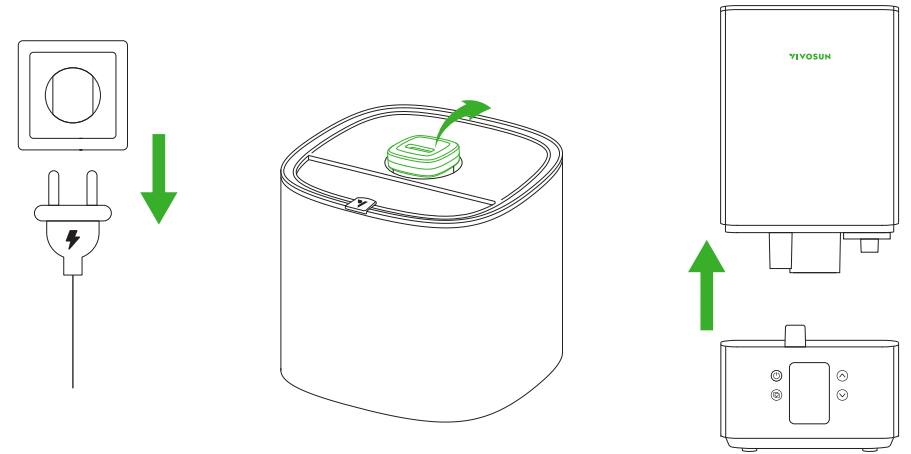


Maintenance

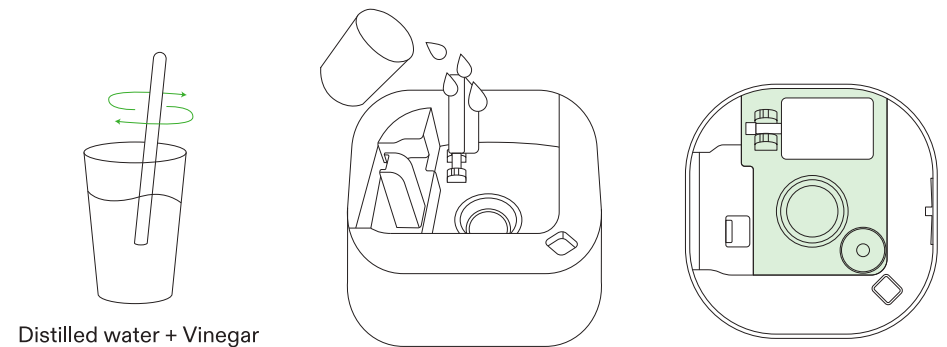
Clean and maintain the device on a weekly basis;

For optimal performance, use DISTILLED WATER ONLY.

- STEP 1**
- Turn off the AeroStream and unplug it from the power outlet.
 - Detach the Top Cover and Mist Outlet / Flexible Hose.
 - Remove the water tank and place it in a sink for cleaning.



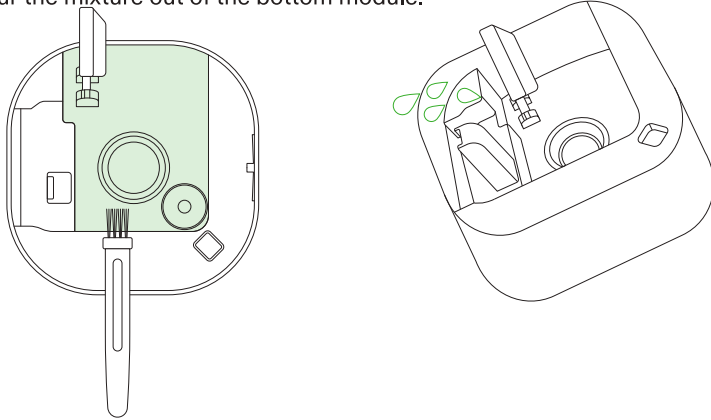
- STEP 2**
- Mix half a cup of distilled water and half a cup of vinegar in a 1:1 ratio.
 - Pour the mixture into the bottom module.
 - Wait 10 minutes.



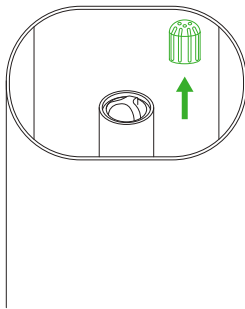
Distilled water + Vinegar

Maintenance

- STEP 3**
- Use the included cleaning brush to gently scrub the surface ionizers to remove any residue or debris.
 - Stand the float upright, cleaning the float and bottom module.
 - Pour the mixture out of the bottom module.

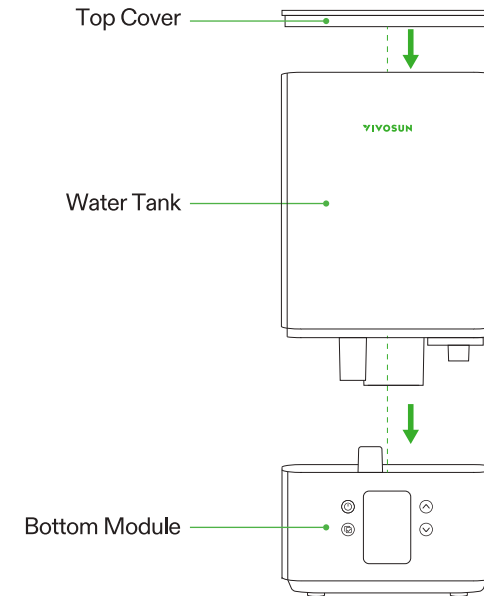


- STEP 4**
- Empty the water tank and remove the filter. Soak the filter in a 1:1 vinegar-water solution for about 10 minutes.
 - Wipe the water tank and top cover with a dry, clean cloth.
 - Gently brush the filter with a cleaning brush, dry it, and reinstall it.



Maintenance

- STEP 5**
- Use a clean towel to wipe the surface of the device.
 - Reassemble the bottom module, water tank (with filter properly installed), top cover and outlet/hose.



Complete Your Setup



LED GROW LIGHT

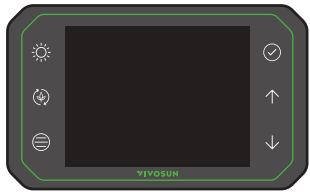
AeroLight/VS/VSX/VSF

- 100W–645W high-powered LED grow light
- High PPE efficacy with Samsung LEDs
- Full spectrum including FR/UV
- 0–100% dimming with daisy-chain capability
- ETL/CE/FCC certified
- Compatible with the Vivosun GrowHub controller

CONTROLLER

GrowHub E42/E42A

- Wi-Fi remote control with the Vivosun App
- Complete control of lights, inline fans and circulation fans
- Temp./Humidity monitoring and control
- Compatible with Vivosun devices such as AeroLight, AeroZesh and VS series lights
- Professional controller designed for growers of all levels



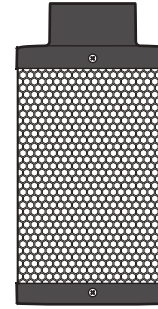
INLINE DUCT FAN

AeroZesh

- Efficient airflow with high static pressure
- 4" / 6" / 8" for different sized tents
- Quiet, energy efficient EC motor
- Dual ball bearings with long lifespan
- Precise fan speed adjustment by PWM
- Compatible with the Vivosun GrowHub controller for multiple professional operation modes

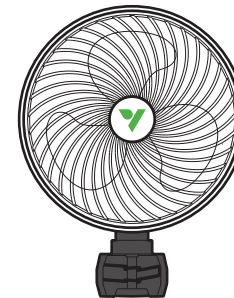


Complete Your Setup



CARBON FILTER

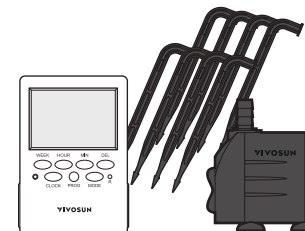
- Eliminates odors and refreshes air
- Premium-grade Australian charcoal
- High absorption efficiency and long lifespan
- 4" / 6" / 8" compatible with different inline fans



CLIP-ON CIRCULATION FAN

AeroWave

- Patented clip-on design
- Automatic oscillation
- Adjustable fan speed
- High airflow and energy efficient
- Compatible with the Vivosun GrowHub controller (E Series)

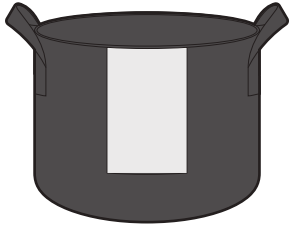


IRRIGATION SYSTEM

FlexFeed

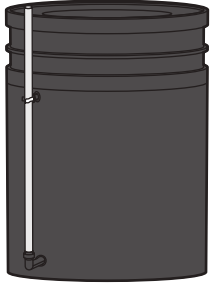
- Automated drip irrigation system
- Professional irrigation settings
- Precise and stable irrigation
- Quiet and efficient
- Easy to install

Complete Your Setup



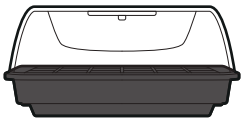
GROW BAG

- Various sizes ranging from 1–30 gallons
- 300G durable nonwoven fabric
- Root breathable and air pruning



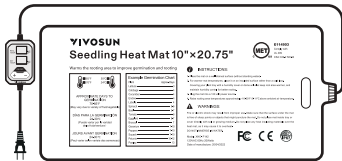
DWC HYDROPONIC SYSTEM

- DWC hydroponic system
- Efficient air-driven top-dripping technology
- One or four 5 gallon-buckets
- Suitable from seedling to harvest
- Easy to install and automated operation



PROPAGATION TRAY & HEAT MAT

- Propagation tray and heat mat kit
- Transparent dome with humidity adjustment
- Heat mat with precise temperature control
- Easy and safe to use



For additional information about our products and personalized recommendations for a growing system tailored to your needs, please don't hesitate to get in touch with us.

Warranty

Vivosun provides a one-year warranty against defects on AeroStream Humidifiers purchased directly from us or through our authorized dealers. This policy serves as our commitment to promptly address any manufacturing defects or premature breakage that may occur during normal use of our products.

Our warranty covers the replacement or refund of purchases that exhibit material defects within one year of the original purchase date. In such events, customers may contact us to initiate the claim process. We will need proof of purchase to verify coverage eligibility.

This policy does not extend to products that have been misused, abused, or purposefully damaged. It also does not cover normal wear and tear, or cosmetic defects such as minor scratches.

Customers can rest assured knowing that our products undergo rigorous quality testing procedures. This one-year warranty reflects our confidence in the durability of our products under normal use.



If any product defects are found, customers are encouraged to contact us immediately. Your satisfaction is our priority, and we are committed to resolving any issues in a professional and timely manner.

FCC Warning

This equipment has been tested and found to comply with the limits for a Class B digital device, pursuant to part 15 of the FCC Rules. These limits are designed to provide reasonable protection against harmful interference in a residential installation. This equipment generates, uses and can radiate radio frequency energy and, if not installed and used in accordance with the instructions, may cause harmful interference to radio communications. However, there is no guarantee that interference will not occur in a particular installation. If this equipment does cause harmful interference to radio or television reception, which can be determined by turning the equipment off and on, the user is encouraged to try to correct the interference by one or more of the following measures:

- Reorient or relocate the receiving antenna.
- Increase the separation between the equipment and receiver.
- Connect the equipment into an outlet on a circuit different from that to which the receiver is connected.
- Consult the dealer or an experienced radio/TV technician for help.

Caution: Any changes or modifications to this device not explicitly approved by manufacturer could void your authority to operate this equipment.

This device complies with part 15 of the FCC Rules. Operation is subject to the following two conditions:

(1) This device may not cause harmful interference, and (2) this device must accept any interference received, including interference that may cause undesired operation.

This equipment complies with FCC radiation exposure limits set forth for an uncontrolled environment. This equipment should be installed and operated with minimum distance 20cm between the radiator and your body

ISED Statement

English: This device contains licence-exempt transmitter(s)/receiver(s) that comply with Innovation, Science and Economic Development Canada's licence-exempt RSS(s).

Operation is subject to the following two conditions:

- (1) This device may not cause interference.
- (2) This device must accept any interference, including interference that may cause undesired operation of the device.

French: Cet appareil contient des émetteurs/récepteurs exempts de licence qui sont conformes aux CNR exempts de licence d'Innovation, Sciences et Développement économique Canada. Le fonctionnement est soumis aux deux conditions suivantes :

- (1) Cet appareil ne doit pas causer d'interférences.
- (2) Cet appareil doit accepter toute interférence, y compris les interférences susceptibles de provoquer un fonctionnement indésirable de l'appareil.

This device meets the exemption from the routine evaluation limits in section 2.5 of RSS 102 and compliance with RSS 102 RF exposure, users can obtain Canadian information on RF exposure and compliance.

cet appareil est conforme à l'exemption des limites d'évaluation courante dans la section 2.5 du cnr - 102 et conformité avec rss 102 de l'exposition aux rf, les utilisateurs peuvent obtenir des données canadiennes sur l'exposition aux champs rf et la conformité.

This equipment complies with Canada radiation exposure limits set forth for an uncontrolled environment.

This equipment should be installed and operated with minimum distance 20cm between the radiator & your body.

Cet équipement est conforme Canada limites d'exposition aux radiations dans un environnement non contrôlé.

Cet équipement doit être installé et utilisé avec une distance minimale de 20 cm entre le radiateur et votre corps.