

Maintenance and Cleaning

1. The motor and rotor blade of the Inline Duct Fan should be inspected every 6 months.
2. Fan maintenance should be performed by capable personnel.
3. Turn off the power when cleaning or repairing the fan. After cleaning or repairs, please confirm the integrity of the fan and ensure all components are properly installed before turning it on.

Operating Environment Requirements

1. Operating temperature and humidity
Operating temperatures: $-40^{\circ}\text{C}/-104^{\circ}\text{F}$ to $+65^{\circ}\text{C}/+149^{\circ}\text{F}$;
Operating humidity: 5% to 95% RH
2. Presence of electrically-conductive air particles: the air in the area of operation should be free of significant concentrations of electrically-conductive particles such as active carbon, ferrous powders, etc.
3. Storage temperature and humidity
Storage temperatures: $-40^{\circ}\text{C}/-104^{\circ}\text{F}$ to $+65^{\circ}\text{C}/+149^{\circ}\text{F}$;
Storage humidity: 0% to 85%RH

Please read the following warnings carefully before initial use. Failure to observe these safety warnings may result in serious injury or accidents and will release VIVOSUN of all liability and void all product warranties.

Warning

1. The fan and motor must be operated only within the prescribed scope of temperature ($-40^{\circ}\text{C}/-104^{\circ}\text{F}$ to $+65^{\circ}\text{C}/+149^{\circ}\text{F}$) and humidity (5% to 95%RH) otherwise the device may give users an electrical shock upon contact or cause unexpected damage.
2. The fan should not be operated in environments where there is a significant concentration of electrically-conductive particles, such as active carbon or ferrous powders, in the air.
3. Use the right voltage according to the nameplate, otherwise the product will be damaged.
4. Follow the wiring diagram for installation and ensure the device is connected to the ground if required. Use of an extension cord is not recommended. A poor connection may cause damage to the fan.
5. Exercise caution when moving the fan. Do not lift or carry the fan by its blades, as this may cause the device to produce more noise during operation.
6. The length of the mounting screws must not exceed the specified length, otherwise the fan will be damaged.
7. Do not remove components of the device, as doing so may affect the fan's safe operation, air-tight seal, balance, or other important properties.
8. The overcurrent protector is necessary to prevent damage from overcurrent.
9. Install the fan only as indicated in the user manual. Any other methods of installation may affect its service life.
10. The fan, especially its blades and electrical components, should be kept out of the reach of children. Children must not operate the fan without supervision from an adult.

VIVOSUN

INLINE DUCT FAN WITH VARIABLE SPEED CONTROLLER

ASSEMBLY INSTRUCTION



Designed by **VIVOSUN** in California
Made in P.R.C



Low Noise



Strong Air

INLINE DUCT FAN INSTALLATION DIRECTIONS

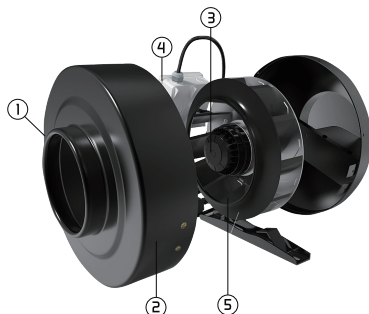
Our Inline Duct Fan is specially designed for easy installation, compatibility and efficiency.

- We designed the inflow and outflow openings to be the same size to eliminate the need for complicated ducting arrangements and installation.
- The impeller is aerodynamically designed to reduce vibration and noise while generating ample power.
- The Inline Duct Fan is lightweight enough to be easily installed by one person. It comes in three sizes, which weigh between 8 lbs (3.6 kg) and 13 lbs (5.9 kg).
- All materials used meet RoHS (Restriction of Hazardous Substances) standards.
- Our Inline Duct Fan can be installed in a wide variety of venues, including hotels, grow rooms, supermarkets, storage areas and bathrooms.

The major components of our Inline Duct Fan are the housing (shell), impeller, motor, base and electrical junction box (connection box).

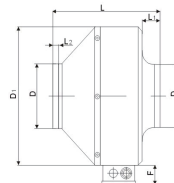
1. **Shell:** Made from high-quality galvanized steel, the shell is highly resistant to atmospheric corrosion. The highly efficient design lets air flow without impediment and facilitates installation.
2. **Impeller:** The uniquely shaped plastic impeller delivers an outstanding performance in combination with the shell. The result is strong wind, impressive energy efficiency and low noise levels.
3. **Motor:** The motor, which has been awarded CCC, CE and UL certification, is designed to save space, reduce noise and vibration and conserve energy. The motor features three speeds as well as an automatic reset function to protect against overheating.
4. **Junction box:** The electrical junction box, made from ABS and flame retardant components, is designed for safety and fire prevention.

Names and Function of Parts



1. Intake Mounting Flange
2. Shell
3. Motor
4. Junction Box
5. Blade

Series



Size	D	D1	L	L1	L2	F
Size	Φ4,0	Φ9,2	7,6	1,0	1,0	1,6
Size	Φ6,0	Φ10,8	7,6	1,0	1,0	1,6
Size	Φ8,0	Φ13,0	8,2	1,0	1,0	1,6

Notes

1. After removing Inline Duct Fan from its packaging, please check the fan's exterior and components to ensure no damage was sustained during shipping.
2. The Inline Duct Fan should only be operated within its electrical current and voltage ratings.
3. Please wear protective gloves or take similar precautions to prevent accidents when moving or installing the fan.
4. Please turn off the power before cleaning or performing maintenance.
5. Please do not expose the fan to sunlight, rain, snow, or other harsh conditions.
5. Please ensure there is no risk the main switch will be turned on while installing the fan.
7. Please store and install the fan away from the reach of young children to ensure safety.
8. Please keep the fan away from alcohol, gasoline, corrosive chemicals, and flammable or explosive compounds to prevent fire.

Installation Instructions

Please install the inline fan as shown in installation diagrams.

1. When installing or transporting the inline fan, C x 53.33 cm and the blades or allow them to be deformed in any way.
2. Use a filter on the suction shaft to filter out oil and other particulate matter.
3. Make sure to leave an 18*18 mm (0.7*0.7") hole for easy inspection and maintenance when installing the inline fan on the ceiling.
4. The inline fan can be installed on the floor, ceiling, or wall. Please install it on a solid surface and never on an unstable surface such as gypsum board.
5. Always use the mounting bracket as well as proper nuts and bolts to install the inline fan.

