

VIVOSUN

4L/5L Garden Pressure Sprayer

ASSEMBLY INSTRUCTIONS



Designed by **VIVOSUN** in California
Made in P.R.C



Chat Support



Product Inquiry



Orders FAQ



Product Assembly

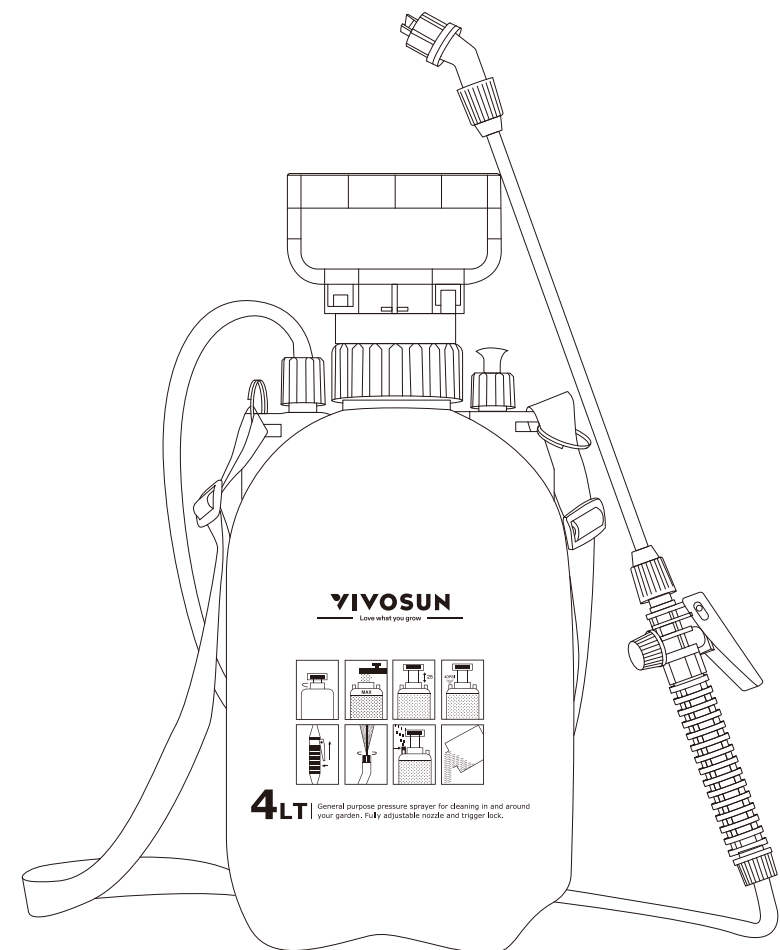


Notes

VIVOSUN

4L/5L Garden Pressure Sprayer

ASSEMBLY INSTRUCTIONS



/ CONTENTS /

1. Principal Functions.....	2
2. Structure, Operating Principles, and Features.....	2
3. Part Descriptions and Technical Parameters.....	2
4. Precautions	4
5. Operating Instructions.....	5
6. Structural Diagram and Details.....	7
7. Cleaning and Maintenance.....	9
8. Storage.....	9
9. Troubleshooting	10
10. Packing List	10

This manual is a part of the Pressure Sprayer unit. Please read this entire manual carefully before operating the unit to avoid bodily injuries and retain it for future reference.

9. Troubleshooting

Problems	Potential Causes	Solutions
Leakage or poor spraying performance.	<ul style="list-style-type: none"> Seal rings at various joints may be loose or damaged. The small filter screen of the suction hose may be blocked. The spray nozzle may be blocked. Insufficient air pressure. 	<ul style="list-style-type: none"> Tighten or replace it. Clean it. Clean and repair it. Pump to add air pressure.
Extra-high pumping pressure.	<ul style="list-style-type: none"> Insufficient lubrication at the O-ring of the piston. The pressure of the tank may be too high. 	<ul style="list-style-type: none"> Apply grease to the O-ring of the piston. Cease inflating and check whether the safety valve is blocked or working. Apply lubrication to the safety valve if necessary.
Extra-low pumping pressure.	<ul style="list-style-type: none"> The O-ring of the piston may be worn or damaged. The waterproof washer may have come off. 	<ul style="list-style-type: none"> Replace the O-ring of the piston. Repair it.
Spraying air instead of water.	<ul style="list-style-type: none"> The suction hose in the tank may have come off. 	<ul style="list-style-type: none"> Remove the nut to empty the residuals in the air chamber. Tightly insert the suction hose into the rubber tube and apply a waterproof adhesive to the joint.

10. Packing List

S/N	Description	Unit	Qty.
1	Main Unit	Set	1
2	Spray Rod	Pc(s).	1
3	User Manual	Pc(s).	1

7. Cleaning and Maintenance

After use, please wash the surface of the sprayer in an appropriate cleaning site. Add clean water to the tank. Then, pump and spray the water until the drainage (i.e., water flowing out) becomes clean.

Please clean the sprayer head with water. Never use a hard object to remove impurities inside the sprayer nozzle. Lubricate the O-ring of the spray head after cleaning.

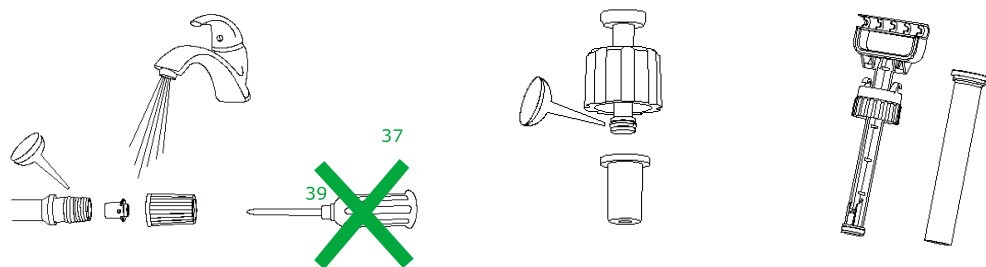
The compression sprayer requires occasional maintenance, such as:

1. After a 1- or 2-month period of frequent use;

2. After a prolonged period without being used;

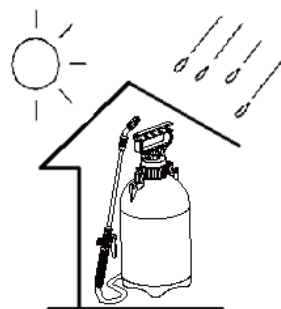
Proper maintenance:

Use a low viscosity grease to lubricate the O-rings on the safety valve and on the piston.



8. Storage

The sprayer should be stored in a dry place indoors and out of the reach of children. Please release the gas in the tank before storing the sprayer.



1. Principal Functions

This product is one of the compression sprayers developed by this company. It is economical, safe, and highly efficient. It has a simple structure, operates conveniently, and sprays uniformly. The sprayer has horticulture, insect control, cleaning, and hygienic applications.

2. Structure, Operating Principles, and Features

Structure: This sprayer comes with five units: a tank, a pump (includes an air pump, pumping handle, and piston), a spraying tube (includes a tube, switch, spraying rod, and spraying head), a safety valve, and a strap.

Principles: The pumping handle moves up or down to enable the compressed air to enter the tank. This produces a pressure difference between the inside and the outside of the tank, which drives the chemical into the tube and spraying rod.

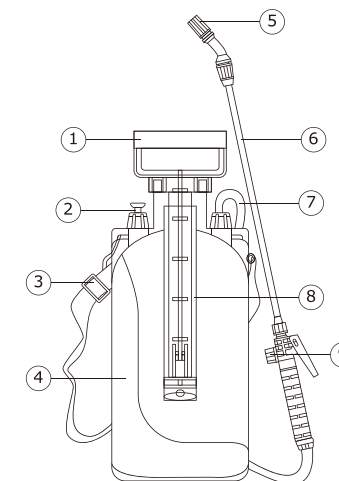
Features:

1. The design is elegant, simple, and allows users to operate the spray conveniently without worrying about leakage.
2. The sprayer comes with a trigger switch, which controls leakage and allows the user to flexibly operate the spray.
3. Made of high-quality materials to ensure that the spray is resistant to acids, bases, and corruptions. The product is well-sealed and durable.

The BBA approved pesticide is applicable for this sprayer.

3. Part Descriptions and Technical Parameters

- | | |
|------------------|-----------------|
| 1. Air pump | 6. Sprayer rod |
| 2. Safety valve | 7. Rubber tube |
| 3. Strap | 8. Air cylinder |
| 4. Tank | 9. Switch |
| 5. Spraying head | |

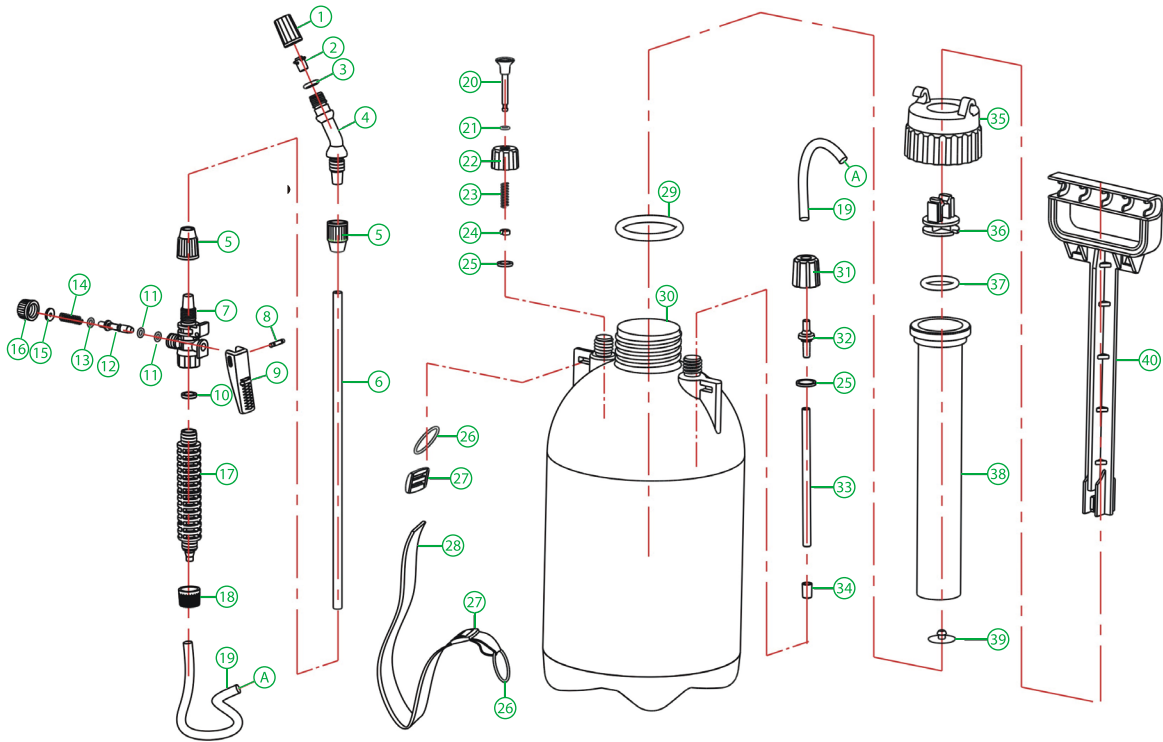


Type	Volume of Tank	Max Operating Pressure	Operating Stroke
Compression	4L	2 bar	217mm
	5L	2 bar	217mm
	7L	2 bar	217mm
	8L	2 bar	217mm

Flow Rate (2 bar)	Overall Size (mm)	Net Weight of the Whole Unit
0.35 L/min	180x400	0.90 Kg
0.35 L/min	180x430	0.96 Kg
0.35 L/min	180x530	1.22 Kg
0.35 L/min	180x565	1.30 Kg

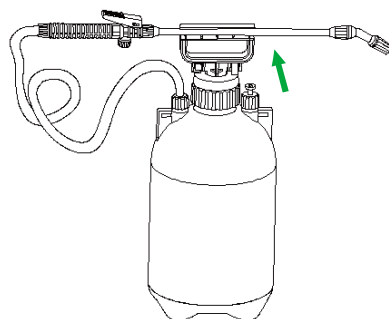
4. Precautions

Hazards	
	Please read this entire manual carefully and follow the instructions to properly operate the pressure sprayer.
	The user should wear a mask, operation hat, protective clothing, waterproof gloves, and rubber boots while operating the sprayer.
	Keep the sprayer out of the reach of children. When disposing of pesticides, please follow the safety instructions published by the manufacturer.



3 kinds of sprinkles		
	Adjustable dual nozzles can change the spray range.	
	Basic sprinkler head can meet daily needs.	
	The fan shape can have a wider spray range.	

4. Fixing the spray rod



6. Structural Diagram and Details





S/N	Description	Quantity	S/N	Description	Quantity
1	Cap	1	21	O-ring $\Phi 7.6 \times 1.9$	1
2	Swirl core	1	22	Cap of safety valve	1
3	O-ring $\Phi 14 \times 2$	1	23	Spring of safety valve	1
4	Bend	1	24	snap fastener	1
5	Lid of sprayer rod	1	25	Flat washer	1
6	Sprayer rod	1	26	Strap ring	1
7	Switch body	1	27	Strap button	1
8	Switch pin	1	28	Strap	1
9	Press plate	1	29	O-ring $\Phi 55 \times 5$	1
10	Seal ring of the handle	1	30	Tank	1
11	O-ring $\Phi 6.8 \times 1.6$	1	31	Cap of rubber tube II	1
12	Valve plug	1	32	Coupling head	1
13	O-ring $\Phi 7.6 \times 1.9$	1	33	Suction hose	1
14	Switch spring	1	34	Small filter screen	1
15	Switch seal ring	1	35	Air cylinder cap	1
16	Switch nut	1	36	Piston	1
17	Switch handle	1	37	Piston O-ring 35.6×4.8	1
18	Rubber tube cap I	1	38	Air cylinder	1
19	Rubber tube	1	39	Water-proof washer	1
20	Safety valve rod	1	40	Pump handle	1

*The O-rings in the spare part bag are provided for future replacement, in case the old ones break.

Hazards

	In the case of inhalation: immediately leave the vicinity and lie down in a well-ventilated area. If skin comes into contact with the pesticide, immediately rinse the skin with water. In the case of ingestion, induce vomiting with clean or salt water and go to the hospital as soon as possible.
	Do not spray at humans or animals. Do not operate against the wind.
	Keep the residual chemical in a container. Do not pour the residual chemical onto the field, ground, or rivers. Collect the empty bottles and bags and send them to the manufacturer for proper disposal, or bury them deep in barren land with low rainfall levels and far away from living areas and water sources.
	Do not dispense pesticide if fatigued, in poor health, injured, allergic to pesticide, or pregnant. Do not consume alcohol immediately after using the spray.
	Do not use strong acids, alkaline, or other inflammable solutions. Do not use highly toxic or persistent pesticides on crops, vegetables, fruits, and medicinal or tea leaves. The harvesting time should be long after the application of the pesticide.
	Avoid exposure to heat sources and the sun.
	Do not leave the sprayer unattended in a public place. It may pose a risk to public safety.

Precautions

	Do not put chemicals over 40°C into the sprayer.
	Perform a trial spray with clean water before operating to check for possible leakage in the tank, hose, switch, and spraying head.
	Follow the instructions and formula published by the pesticide manufacturer when preparing the chemicals for use. Unauthorized altering of the formula or dilution rate is prohibited, as it may endanger the user and animals or result in pest control failure.
	Change clothes and wash exposed parts of your body after operating the sprayer. In the case of using highly toxic pesticide and germicide, the user should shower after operation to ensure their safety.

5. Operating Instructions

After unpacking, check whether the components and parts in the packing case match the items in the packing list. Once this check is complete, assemble the spray according to the following instructions.

Diagram of the installation of the spraying rod.

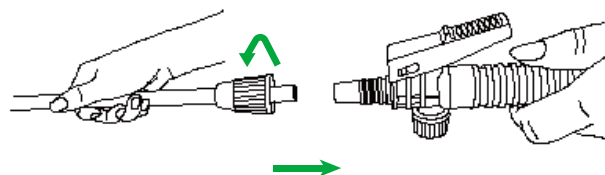


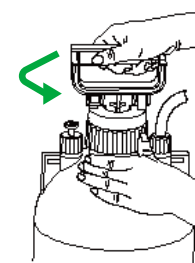
Diagram for installation of spraying rod

While operating, hold the handle and press it down forcefully to move its lower part into the groove of the guide holder. Turn the handle to dismount the pump set. Fill the pre-mixed liquid to the rated capacity before tightening the pump.

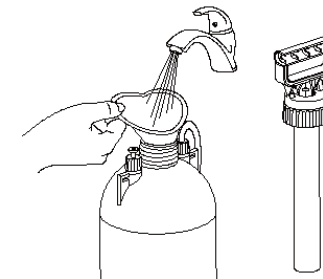
Please make sure that the liquid does not exceed the maximum water level marked on the tank. Otherwise, the sprayer will easily blow up.

Draw the handle out of the groove and start inflating evenly to add more pressure to the tank (Note: the switch here MUST be turned off). When the pressure increases, the sprayer is ready for use. Hold the switch handle while using the sprayer.

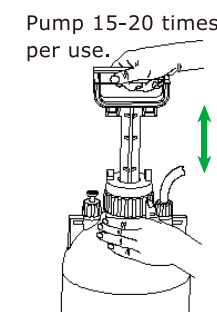
You may choose the spot spraying option or the continuous spraying option. You may also regulate the spray nozzle to improve the quality of atomization, depending on the requirements of different props.



1. Switch Control

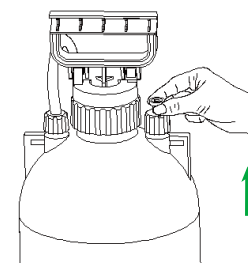


Spot Spraying



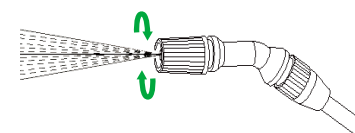
Continuous Spraying

2. Explanation of Safety Valve

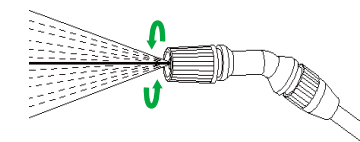


Note: if there is pressure in the tank, release it before removing the air cylinder. Press the switch plate or pull the valve stem of the safety valve to release pressure. When the air pressure in the tank rises to about 3-3.5bar, the safety valve will discharge the redundant air, which keeps the pressure at a stable level.

3. Adjust the spraying head



Tightened Nozzle
"shower" spray



Loosened Nozzle
"watercolumn" spray