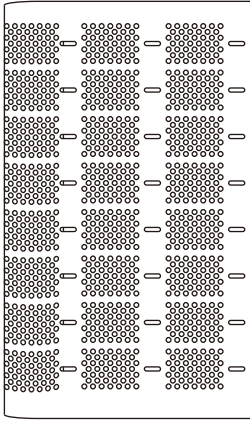


VIVOSUN

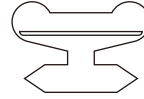
COMPOST BIN

PARTS LIST

1



2

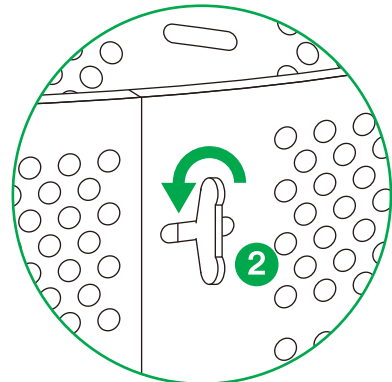
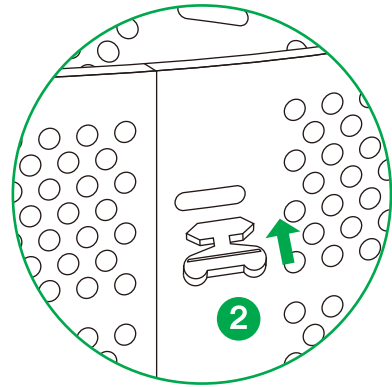
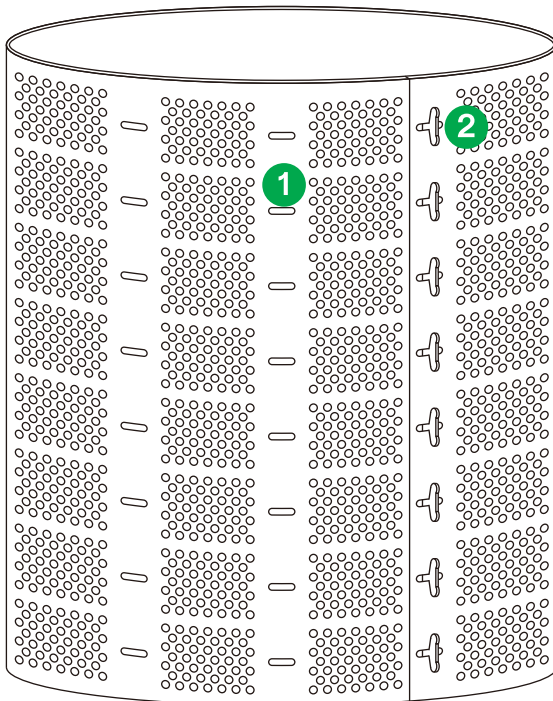


3



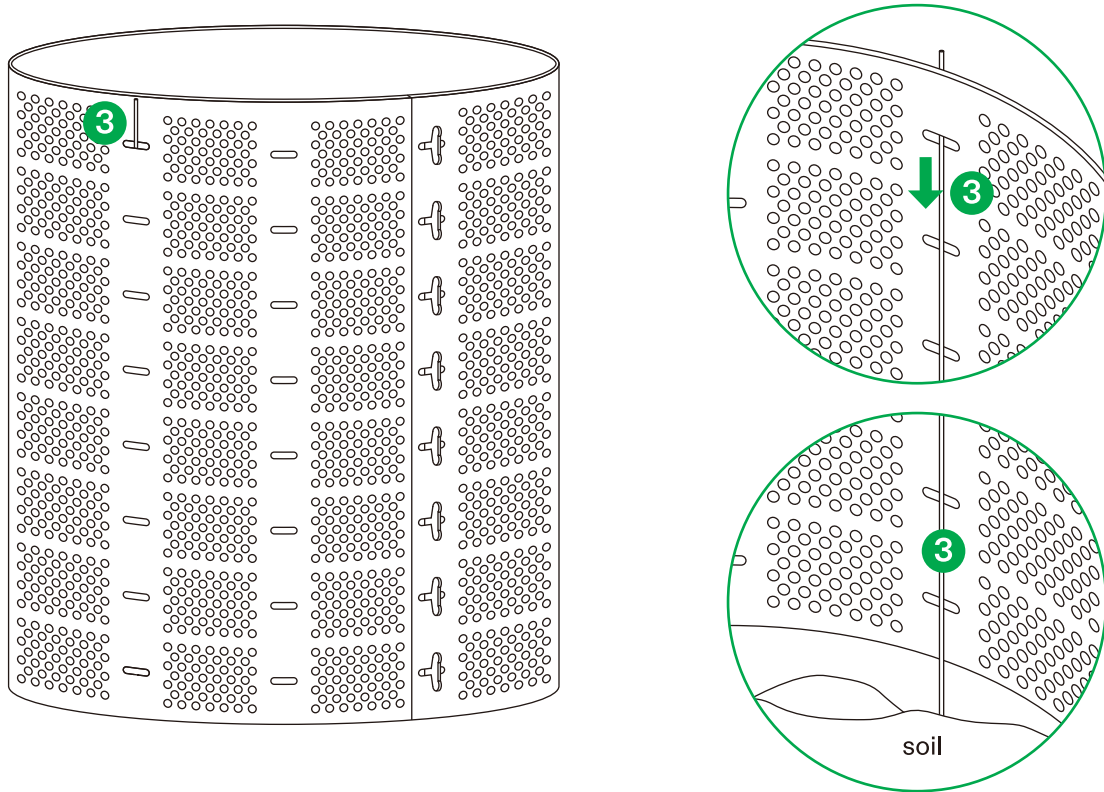
INSTALLATION

STEP 1 Expand compost bin to the desired diameter. Insert the key through the overlapping slot, then turn to lock it.

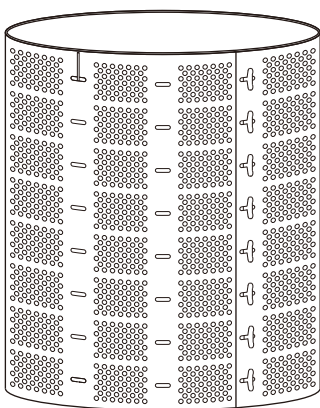


INSTALLATION

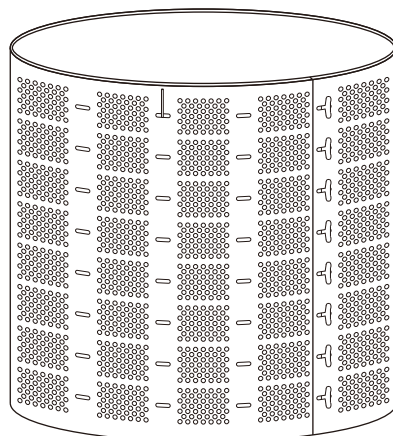
STEP 2 Insert the support rod from the first hole, and the bottom is inserted into the soil for more stability.



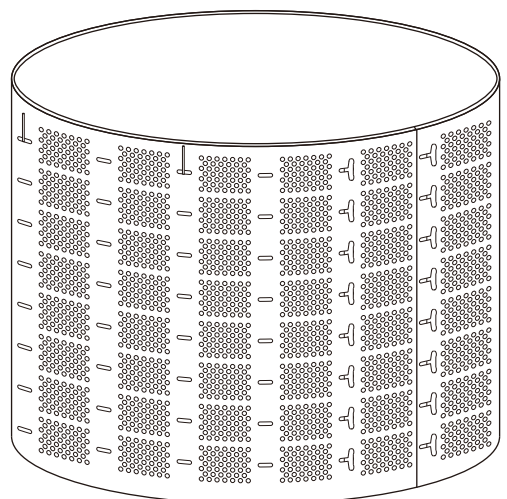
STEP 3 The 220 gallon, 300 gallon or 500 gallon you purchased will be shown in the picture below after assembly.



220 Gallon



300 Gallon



500 Gallon