

VIVOSUN

VIVOSUN

Thank You For Purchasing From VIVOSUN



Chat Support



Product Inquiry



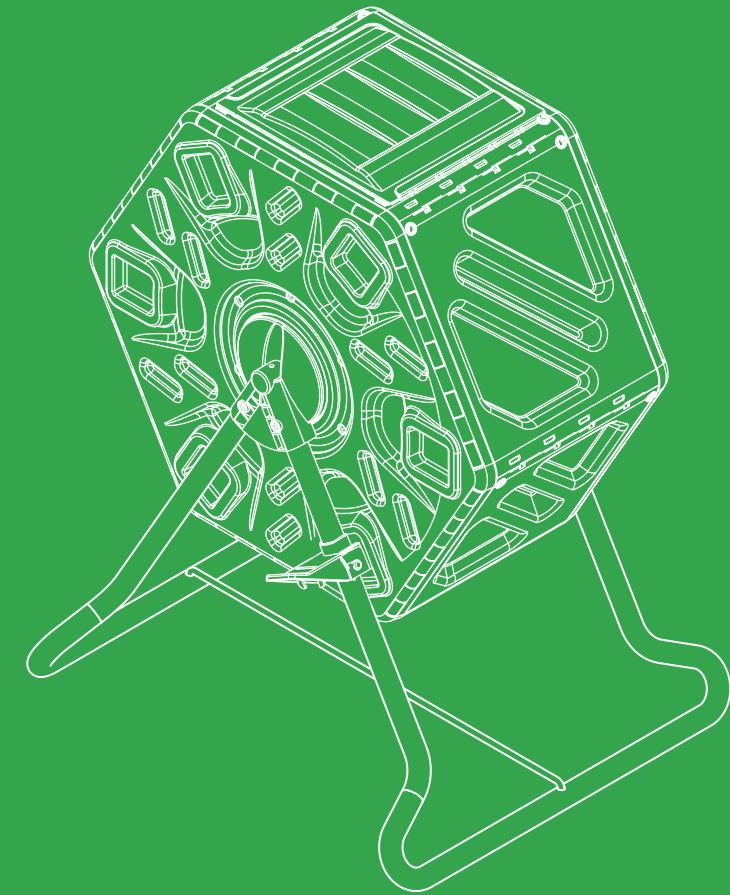
Order FAQ



Product Assembly



Returns & Refunds



COMPOST BIN WITH SINGLE CHAMBER

Assembly Instructions

DESIGNED BY **VIVOSUN** IN CALIFORNIA
Made in P.R.C

GENERAL GUIDELINES

- Please read the following instructions carefully and use the product accordingly.
- Please keep this manual and transfer it if you ever transfer the product.
- This summary may not include every detail or all possible variations and the steps required to achieve them. Please contact us when further information and help are needed.

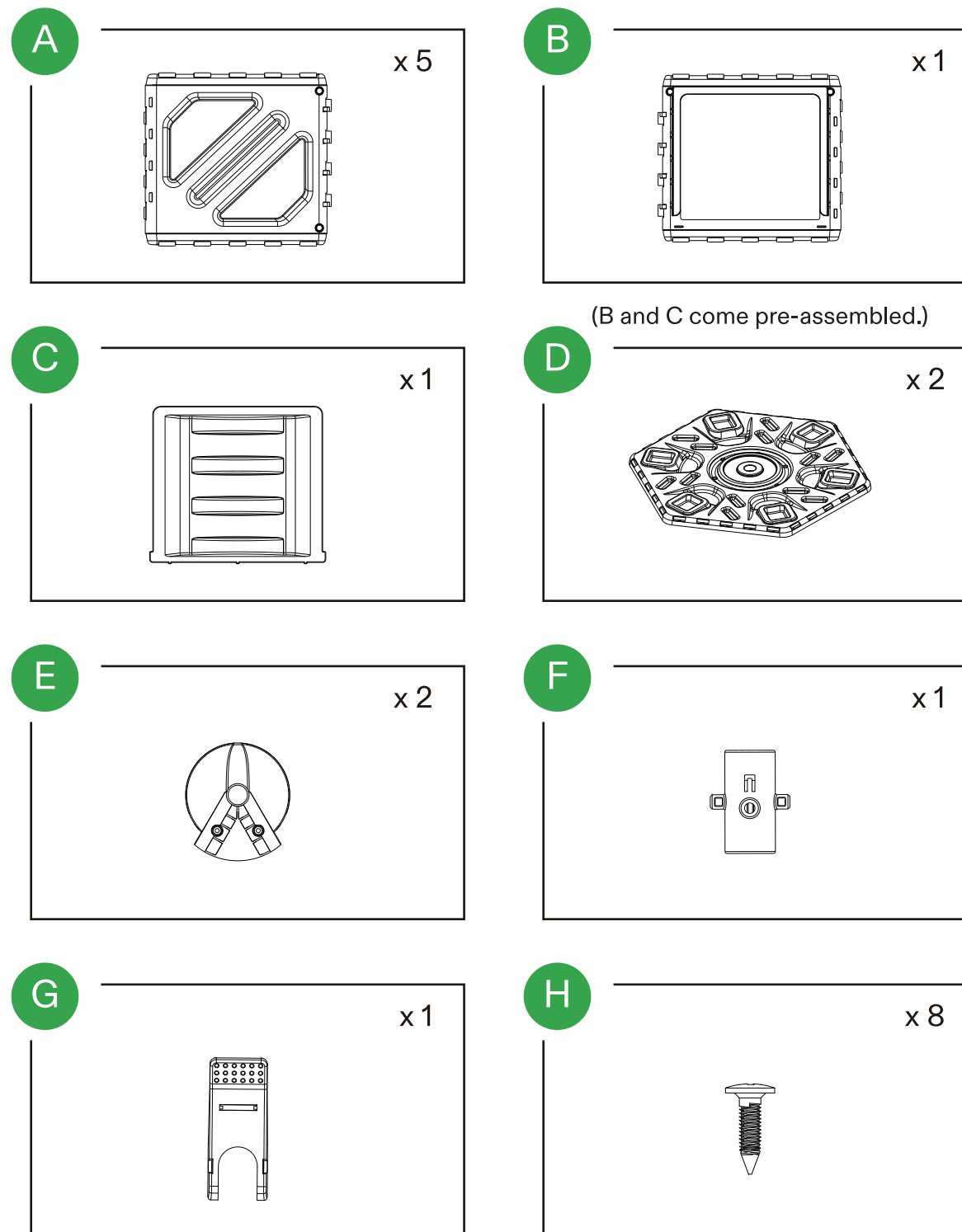
NOTE

- The product must be assembled and used in accordance with the provisions of the manual.
- Avoid long-term exposure to humid environments to prevent mildew.
- Keep the product away from fire sources and high temperatures. Do not expose the product to direct sunlight.
- Do not place any hot objects on the surface of the product.
- If there are any defective or missing parts after unpacking, please cease assembly immediately and contact us.
- Please assemble the item on a spacious surface and do not place the unwrapped product directly on the ground to avoid product damage.
- Please do not stand or sit on the wooden boards.
- Please keep the product away from sharp, pointed objects and corrosive substances to prevent product damage.

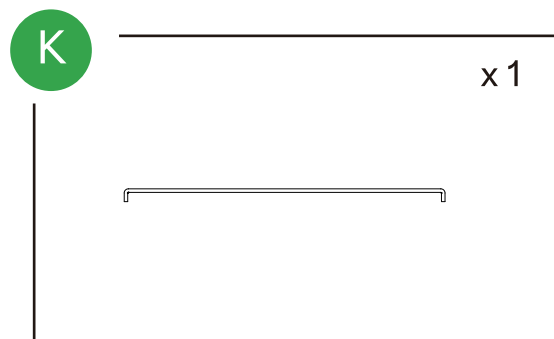
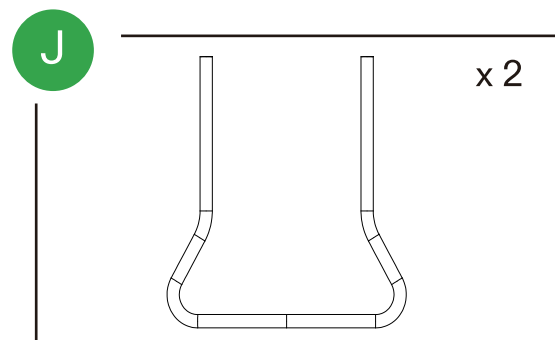
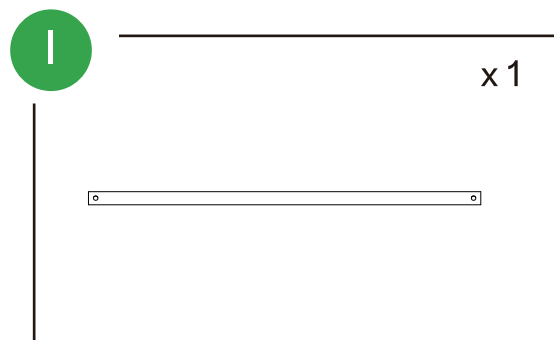
WARNINGS

- Children are not allowed to assemble the product. During assembly, keep all small parts out of the reach of children as they may be fatal if swallowed or inhaled.
- Children are forbidden to climb or play on the product to avoid serious bodily injury caused by any potential fall.

PART LIST

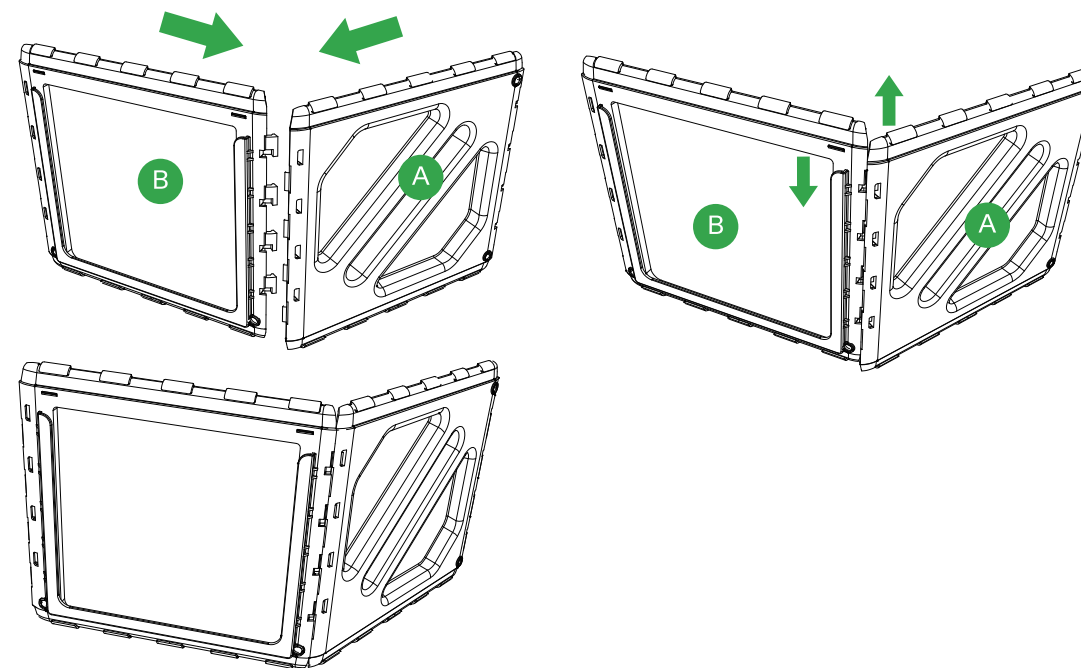


PART LIST

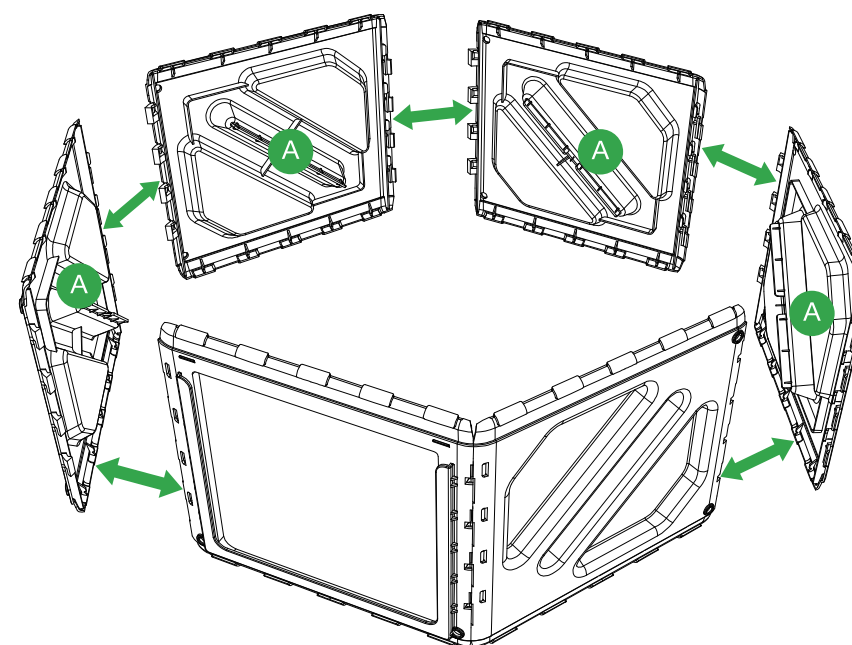


PRODUCT ASSEMBLY

- 1** Match A and B and slide into the right position.

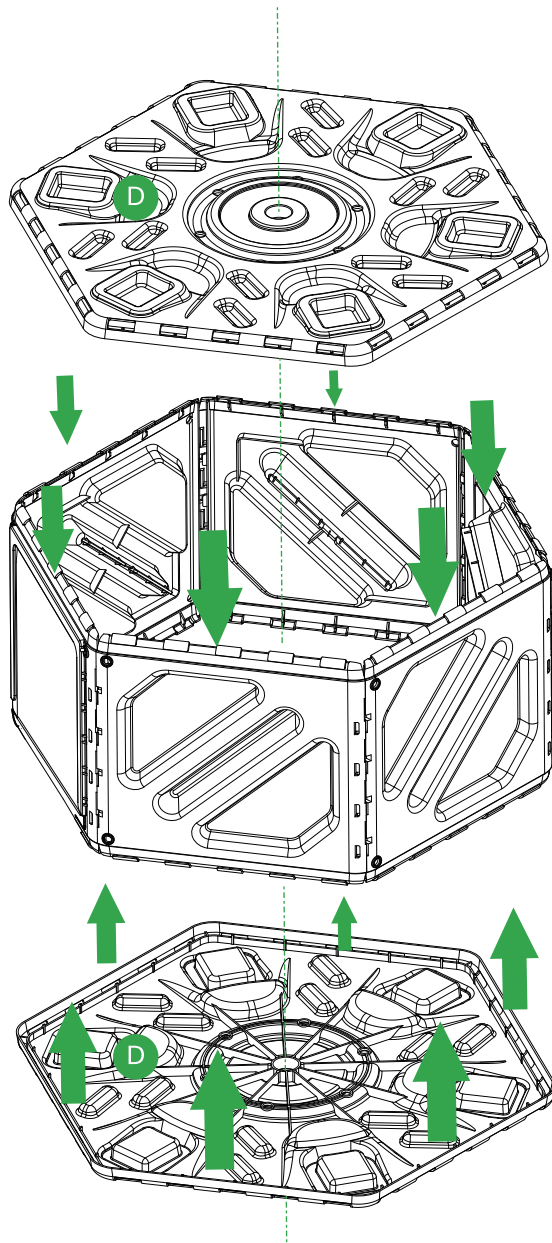


- 2** Repeat with the rest 4 of A panels.



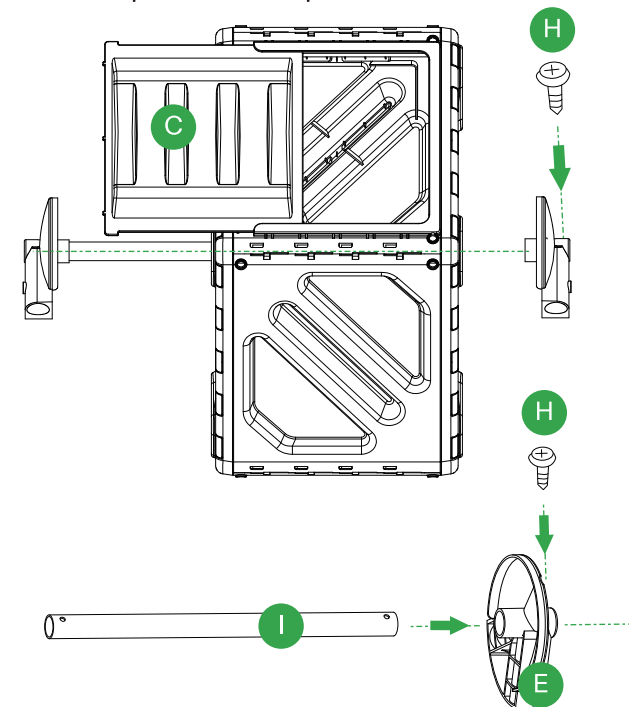
PRODUCT ASSEMBLY

- 3 Finish the chamber after click on the two side panels.

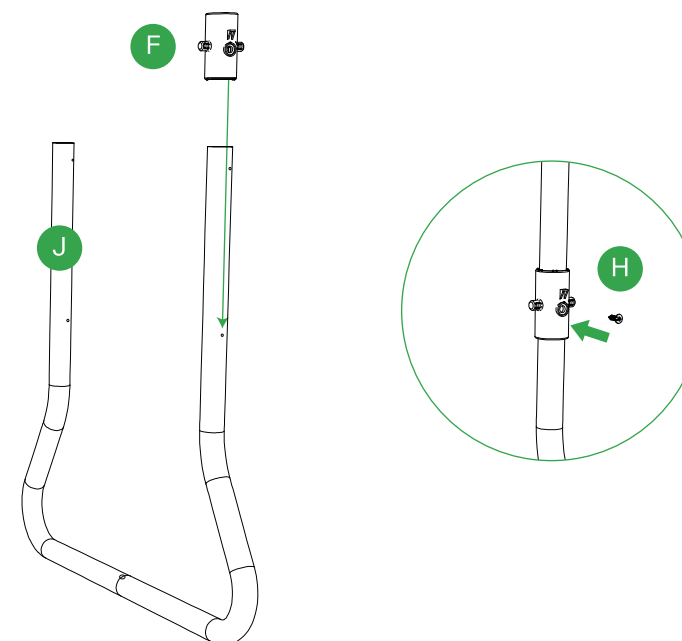


PRODUCT ASSEMBLY

- 4 Make sure the part C towards out side when you put the chamber together with part I. Meanwhile install part H on the part E.

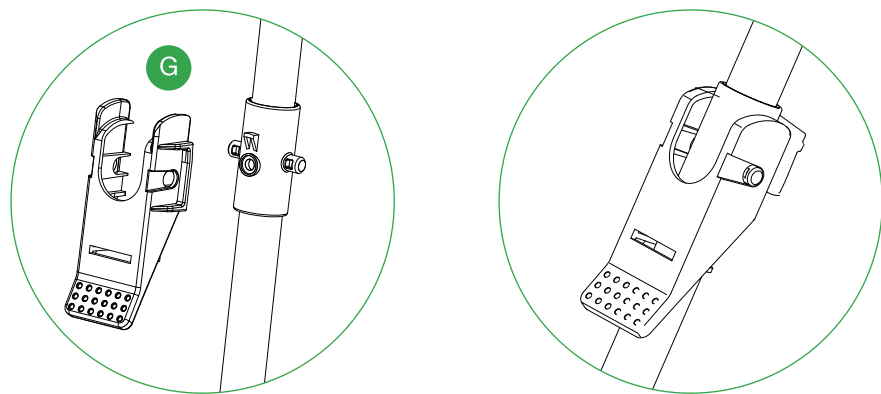


- 5 Install part F on the J and tighten with part H.

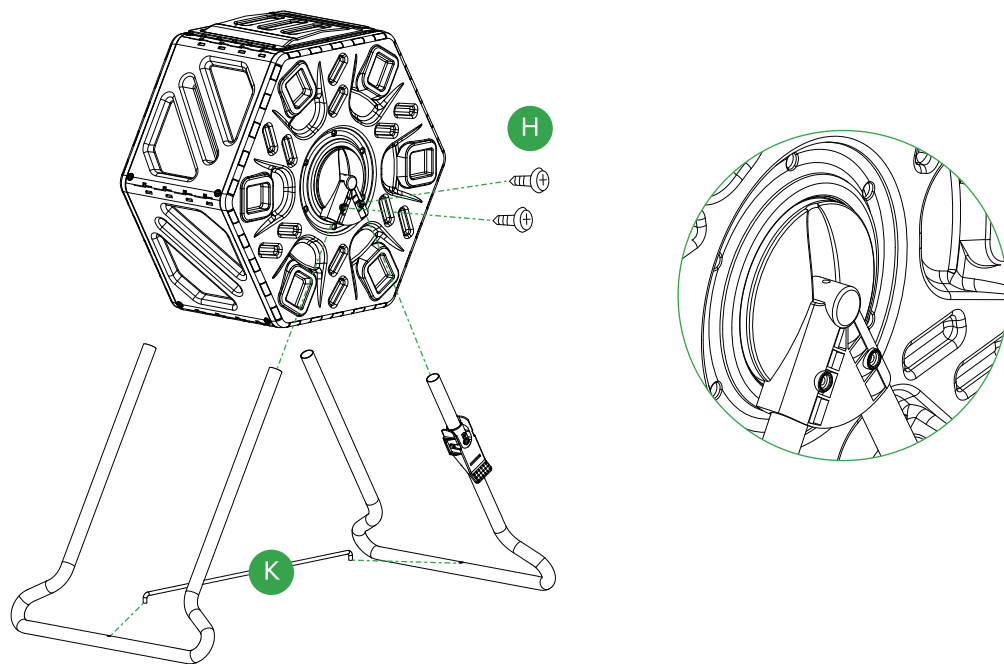


PRODUCT ASSEMBLY

6 Then buckle up G on the part F as the picture shows.

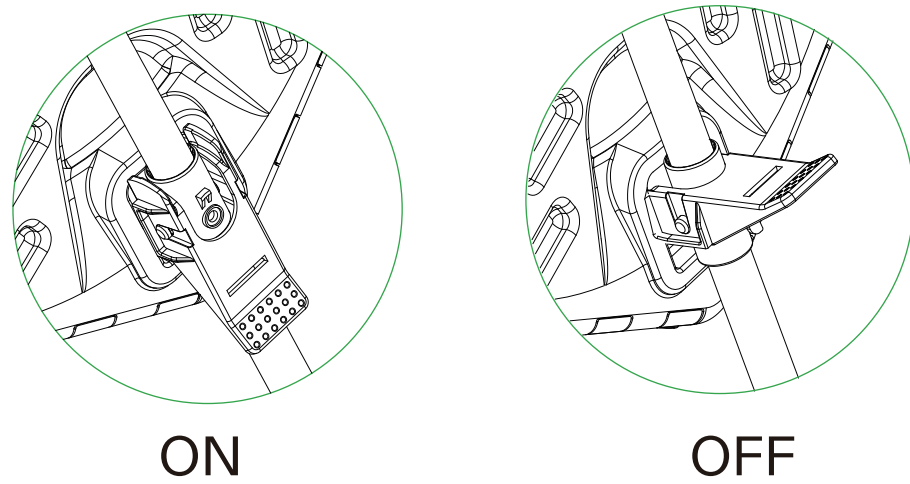


7 Install the compost bin on the base brackets and tighten with part H, then install the part K between the base brackets.



PRODUCT ASSEMBLY

8 You can stabilize the compost bin by part G.



9 Finished!

