
GrowHub A10

User Manual



YIVOSUN

Welcome to **VIVOSUN**

At Vivosun, quality craftsmanship and innovation are at the core of every product we create. Should you require further support or wish to share any suggestions, please don't hesitate to contact us.

**Love
what
you
grow™**



Safety Information

Please read the following information carefully before using the product. Failure to follow these safety instructions may result in serious injury and will release Vivosun of all liability and void all product warranties.

1. Carefully review all instructions before installing and using this product.
2. Confirm that your power source meets the product's electrical specifications.
3. Do not connect devices that exceed the product's rating of 120-240V AC, 1800W, 15A.
4. Check local code regulations for any additional safety measures required for compliant installation.
5. Plug the product in correctly and keep it out of reach of children.
6. If you are unsure about the installation process, consult a licensed professional. Improper installation may void the warranty.



Safety Information

7. Do not hardwire this product. Retrofitting can cause injury or damage and **will** void the warranty.
8. This product is intended for dry, indoor use **only**. Avoid using it in hazardous environments such as flammable, explosive, chemical-laden, or wet areas.
9. Avoid covering power cords with rugs or other fabrics.
10. Do not insert fingers or foreign objects into any openings, as this can cause electric shock, fire, or damage. Do not **block** or tamper with the product during operation.
11. Do not use the product if it malfunctions, has been dropped, or shows any signs of damage.
12. Ensure the **plug** is **fully** inserted into the socket before use for added safety.
13. Do not **disassemble** the product, as this may cause damage or create safety hazards.

Key Features

A10



GH-A10



Easy Growing

Automatically control all your grow devices for an easy growing experience



SGS Compatible

Connect your favorite grow devices to the Vivosun app for unified control and remote monitoring.



Specifically designed for cultivation

Maintains plant safety by running schedules locally, even when offline.

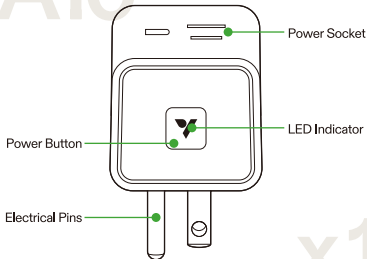


Wide Compatibility

A max load of 15 A supports most grow devices.

Product Contents

A10



x1

Specifications

| | |
|------------------------|---|
| Input | 100–120V ~ 60 Hz |
| Rated Current | 15A MAX FOR GENERAL USE 10A MAX FOR HEATER |
| MAX Total Output Power | 1800 W FOR RESISTIVE LOAD |
| Working Temperature | -20°C – 45°C (-4°F – 113°F) |
| Connectivity | IEEE 802.11 b/g/n, 2.4 GHz |

LED Indicator

| LED Indicator | Status |
|---------------------------|--|
| Fast Flashing White | Wi-Fi disconnected. |
| Solid White | Wi-Fi connected. Default Manual Mode on Vivosun app. |
| Solid Green | Wi-Fi connected. Cycle/Auto/ Recipe Mode on Vivosun app. |
| Alternating White & Green | Wi-Fi connected. Cycle/Auto/ Recipe Mode is changing to Manual Mode. |
| Slow Flashing Green/White | Offline |

Notice:

1. The LED indicator light will turn off after 5 seconds of operation to protect the plants. If you need to check the LED indicator status, briefly press the button to activate the LED indicator.
2. When the GrowHub A10 is offline, the LED indicator will continuously flash green/white slowly until it reconnects to the network.

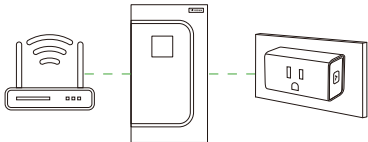
Installation & Connection

STEP 1

Plug the device into a mains outlet located outside the grow tent.

Notice:

1. Ensure the device is within 100 ft of the router.
2. Minimize obstructions (e.g. walls, windows) between the device and the router.



Installation & Connection

STEP 2

Connect GrowHub A10 to the Vivosun app

Step 2.1: Download the Vivosun app

Search Vivosun in the App Store or in the Google Play Store to download the Vivosun app.

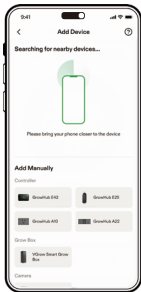
Step 2.2 Add GrowHub A10

Tap "+" or ⊕ to add VGrow. When connecting to the Vivosun app, the LED indicator will flash white.

Note: Make sure you have a 2.4G WiFi connection and that Bluetooth is enabled on your phone.

Installation & Connection

STEP 2



Installation & Connection

STEP 2

Step 2.3 Name Your Device

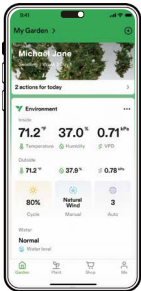
After successfully connecting your GrowHub, you can rename your device and start using it.

Note: You can create a new Garden or add the GrowHub A10 to your existing Garden. It is fully compatible with the GrowHub Controller E42, E42A, and E25.

GrowHub Controllers will run the same recipe if they are in the same Garden.

Installation & Connection

STEP 2



Operation

| LOCAL FUNCTION | OPERATION | LED INDICATOR |
|--|---|---|
| Turn On/Off the device locally | Press the Power Button | White (Wi-Fi disconnected or Manual Mode). |
| Change Cycle/ Auto/Recipe Mode to Manual Mode locally | Press and hold the Power Button for 3 seconds | Alternating white & green when holding the button. Become solid white after successfully changing to Manual Mode. |
| Restore to factory settings | Press and hold the Power Button for 6 seconds | Fast flashing white after successfully restoring to factory settings. |

APP Control

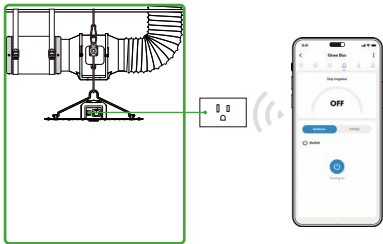
| LED Indicator | Status |
|---|---|
| Remote On/Off | Turn on/off the device on Vivosun app |
| Timer Setting/Cycle | Turn on/off the device at a set time |
| Auto Mode* (Garden must have a temperature or a humidity sensor) | Turn on/off the device at a set temperature/humidity |
| Recipe* (Must work with other devices in the same garden) | Work with other devices in the recipe; Turn on/off the device based on the stage/schedule/temperature/humidity |

Notice:

Auto Mode requires a current temperature/humidity measurement. You can add GrowHub A10 to your garden to customize your own smart growing. Use GrowHub A10 as an expansion port for E42/E42A/E25.

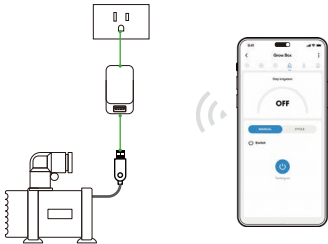
Usage Scenarios

1. Connect the light inside the tent to the smart socket; control via the app.



Usage Scenarios

2. Connect the drip irrigation system from the self-priming water basin to the adapter, then plug it into the smart socket; control via the app.



Warranty

VIVOSUN provides a one-year warranty against defects on GrowHub A10 purchased directly from us or through our authorized dealers. This policy serves as our commitment to promptly address any manufacturing defects or premature breakage that may occur during normal use of our products.

Our warranty covers the replacement or refund of purchases that exhibit material defects within one year of the original purchase date. In such events, customers may contact us to initiate the claim process. We will need proof of purchase to verify coverage eligibility. This policy does not extend to products that have been misused, abused, or purposefully damaged. It also does not cover normal wear and tear or cosmetic defects such as minor scratches.

Customers can rest assured knowing that our products undergo rigorous quality testing procedures. This one-year warranty reflects our confidence in the durability of our products under normal use.



VIVOSUN
Made in China