

---

# GrowCam C4

User Manual



# YIVOSUN

---

Welcome to **VIVOSUN**

At Vivosun, quality craftsmanship and innovation are at the core of every product we create. Should you require further support or wish to share any suggestions, please don't hesitate to contact us.

**Love  
what  
you  
grow™**

## Product Contents



Camera  
x 1pc



Power Cable  
x 1pc



Power Adapter  
x 1pc



Screw Kit  
x 1pc

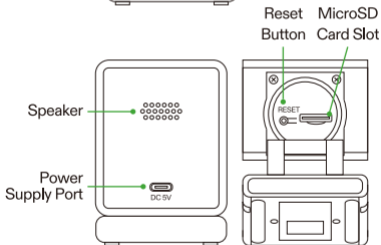
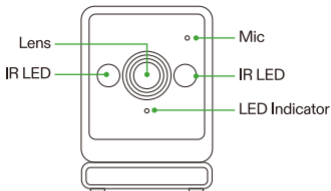


Position Sticker  
x 1pc



Camera Mount  
x 1pc

## Product Contents



---

## Specifications

---

Dimension 1.8" x 2" x 3"

---

Power 5V 1A

---

Sensor CMOS Sensor

---

Resolution 2564 x 1440 (2K)

---

View Angle 117°

---

Video Code H.264/H.265

---

IR Light 2 x IR LEDS (920 nm)

---

Connectivity 2.4 GHz Wi-Fi

---

Local Storage MicroSD card required (Support up to 512 GB)

---

Water Resistance IP54

---

---

## Setup

### NOTICE

**Ensure both your phone and the device are connected to the same Wi-Fi network.**

For local storage, ensure you insert the microSD card before powering on the device to avoid potential damage.

The GrowCam C4 only supports IPv4 routers. If your router uses IPv6, try switching to mobile data to generate and scan the QR code. Once connected, you can switch back to Wi-Fi.

If the device doesn't enter pairing mode, press and hold the reset button until you hear, "Restoring factory settings, please do not power off." The camera will automatically enter pairing mode once the reset is complete.

# Setup

## Step 1

Download the Vivosun app. Search "Vivosun" in the App Store or in the Google Play Store to download the Vivosun app.

## Step 2

Connect the camera to a power outlet and wait for 5 seconds. You will hear the message, "Waiting to connect, please configure the network according to the instructions." and the status light will flash blue rapidly. This indicates that the camera is in pairing mode and ready to connect.

## Step 3

Tap "+" or ⊕ to add a device and select "GrowCam C4". Follow the instructions in the Vivosun App to finish setting up the device.



---

## LED Status Indicator

LED Indicator	Status
Rapid flashing blue light	The device is trying to connect.
Rapid flashing green light	The device is connected and working properly (without a microSD card).
Solid green light	The device is connected and working properly (with a microSD card).
Slow flashing green light	Time-lapse or recording is in progress.

### Notice:

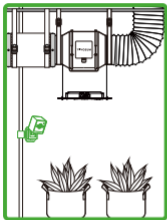
When the GrowCam C4 is disconnected from the network, the LED indicator will continuously flash blue until the connection is restored.



## Installation

**Notice:** Please install away from grow lights to avoid overheating.

### Grow Tent



### VEGrow Smart Grow Box



---

## FCC Warning

Any changes or modifications not expressly approved by the party responsible for compliance could void the user's authority to operate this equipment. This device complies with part 15 of the FCC Rules. Operation is subject to the following two conditions: (1) This device may not cause harmful interference, and (2) This device must accept any interference received, including interference that may cause undesired operation. This equipment has been tested and found to comply with the limits for a Class B digital device, pursuant to Part 15 of the FCC Rules. These limits are designed to provide reasonable protection against harmful interference in a residential installation.

This equipment generates, uses, and can radiate radio frequency energy and, if not installed and used in accordance with the instructions, may cause harmful interference to radio communications. However, there is no guarantee that interference will not occur in a particular installation. If this equipment does cause harmful interference to radio or television

---

## FCC Warning

reception, which can be determined by turning the equipment off and on, the user is encouraged to try to correct the interference by one or more of the following measures:

- Reorient or relocate the receiving antenna.
- Increase the separation between the equipment and receiver.
- Connect the equipment into an outlet on a circuit different from that to which the receiver is connected.
- Consult the dealer or an experienced radio/TV technician for help.

---

## FCC Radiation Exposure Statement

This equipment complies with FCC radiation exposure limits set forth for an uncontrolled environment. This transmitter must not be co-located or operating in conjunction with any other antenna or transmitter.

---

## ISED RSS Warning

This device complies with ISED licence-exempt RSS standard(s). Operation is subject to the following two conditions: (1) this device may not cause interference, and (2) this device must accept any interference, including interference that may cause undesired operation of the device.

---

## ISED Radiation Exposure Statement

This equipment complies with ISED RF radiation exposure limits set forth for an uncontrolled environment. This transmitter must not be co-located or operating in conjunction with any other antenna or transmitter. This equipment should be installed and operated with minimum distance 20 cm between the radiator & your body. Any changes or modifications not expressly approved by the party responsible for compliance could void the user's authority to operate the equipment.

---

## Warranty

Vivosun provides a one-year warranty against defects on GrowCam C4 purchased directly from us or through our authorized dealers. This policy serves as our commitment to promptly address any manufacturing defects or premature breakages that may occur during normal use of our products.

Our warranty covers the replacement or refund of purchases that exhibit material defects within one year of the original purchase date. In such events, customers may contact us to initiate the claim process. Proof of purchase is required to verify coverage eligibility.

This policy does not extend to products that have been misused, abused, or purposefully damaged. It also does not cover normal wear and tear or cosmetic defects such as minor scratches.

Customers can rest assured knowing that our products undergo rigorous quality testing procedures. This one-year warranty reflects our confidence in the durability of our products under normal use.

---

## Warning & Caution

1. Carefully review all instructions before installing and using this product.
2. Plug the product in correctly and keep it out of reach of children.
3. This product is intended for dry, indoor use only. Avoid using it in hazardous environments such as flammable, explosive, chemical-laden, or wet areas.
4. If your device or power cord is damaged, please contact us immediately. Do not disassemble or modify the devices without Vivosun's direction, it may cause damage to the device and will void the warranty.

---

## Avertissement & Précaution

1. Lisez attentivement toutes les instructions avant d'installer et d'utiliser ce produit.
2. Branchez correctement le produit et gardez-le hors de portée des enfants.
3. Ce produit est destiné à une utilisation en intérieur et en milieu sec uniquement. Évitez de l'utiliser dans des environnements dangereux tels que des zones inflammables, explosives, chargées de produits chimiques ou humides.
4. Si votre appareil ou le cordon d'alimentation est endommagé, veuillez nous contacter immédiatement. Ne démontez ou ne modifiez pas les appareils sans l'autorisation de Vivosun, car cela pourrait endommager l'appareil et annuler la garantie.

---

## Warnung & Vorsicht

1. Überprüfen Sie sorgfältig alle Anweisungen, bevor Sie dieses Produkt installieren und verwenden.
2. Schließen Sie das Produkt ordnungsgemäß an und halten Sie es außerhalb der Reichweite von Kindern.
3. Dieses Produkt ist für die trockene, Innenraumnutzung vorgesehen. Vermeiden Sie die Verwendung in gefährlichen Umgebungen wie brennbaren, explosiven, chemisch belasteten oder feuchten Bereichen.
4. Wenn Ihr Gerät oder Ihr Netzkabel beschädigt ist, kontaktieren Sie uns bitte umgehend. Zerlegen oder modifizieren Sie die Geräte nicht ohne Anweisung von Vivosun, da dies Schäden am Gerät verursachen und die Garantie erlöschen lassen kann.



---

## Avvertenza & Cautela

1. Leggere attentamente tutte le istruzioni prima di installare e utilizzare questo prodotto.
2. Collegare correttamente il prodotto e tenerlo fuori dalla portata dei bambini.
3. Questo prodotto è destinato esclusivamente all'uso interno in ambienti asciutti. Evitare di utilizzarlo in ambienti pericolosi come aree infiammabili, esplosive, chimicamente contaminate o umide.
4. Se il dispositivo o il cavo di alimentazione è danneggiato, contattaci immediatamente. Non smontare o modificare i dispositivi senza le indicazioni di Vivosun, poiché ciò potrebbe causare danni al dispositivo e invalidare la garanzia.

---

## Advertencia & Precaución

1. Revise cuidadosamente todas las instrucciones antes de instalar y usar este producto.
2. Enchufe el producto correctamente y manténgalo fuera del alcance de los niños.
3. Este producto está diseñado para uso en interiores y en ambientes secos únicamente. Evite usarlo en entornos peligrosos como áreas inflamables, explosivas, con productos químicos o húmedas.
4. Si su dispositivo o cable de alimentación está dañado, contáctenos de inmediato. No desmonte ni modifique los dispositivos sin la dirección de Vivosun, ya que podría dañar el dispositivo y anular la garantía.

---

## Waarschuwing & Voorzichtigheid

1. Lees alle instructies zorgvuldig door voordat u dit product installeert en gebruikt.
2. Sluit het product correct aan en houd het buiten het bereik van kinderen.
3. Dit product is bedoeld voor gebruik binnenshuis en in droge omgevingen. Vermijd het gebruik in gevaarlijke omgevingen zoals brandbare, explosieve, chemisch beladen of vochtige gebieden.
4. Als uw apparaat of netsnoer beschadigd is, neem dan onmiddellijk contact met ons op. Demonteer of wijzig de apparaten niet zonder instructies van Vivosun, omdat dit schade aan het apparaat kan veroorzaken en de garantie ongeldig kan maken.



**YIVOSUN**

Made in China