

VIVOSUN

Designed by **VIVOSUN** in California.
Made in China



1-Pack Wireless Thermometer and Humidity Monitor
USER MANUAL

Love
what
you
grow™

Welcome to **VIVOSUN**

Thank you for choosing VIVOSUN. We are committed to product quality and friendly customer service. If you have any questions or suggestions, please don't hesitate to contact us.

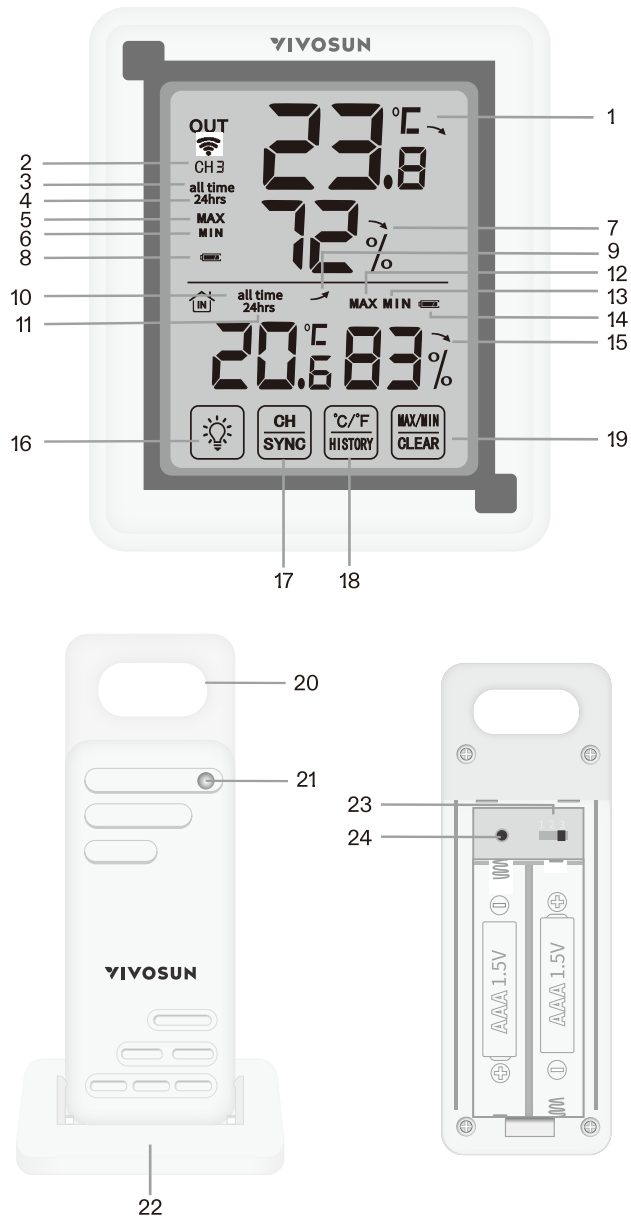
SPECIFICATIONS

- 1.Total 4 functional buttons: BACKLIGHT, CH/SYNC, 0C/°F/HISTORY, MAX/MIN/CLEAR.
2. Displays the indoor&outdoor humidity, temperature, trend and record maximum and minimum humidity/temperature.
- 3.Indoor Temperature range: -4°F - 158°F (-20°C-70°C).
- 4.Outdoor Temperature range:-40°F - 158°F (-40°C-70°C).
- 5.Temperature resolution: 0.1°C/°F.
- 6.Humidity range: 20%-95%; Humidity resolution: 1 %.
- 7.Temperature display unit: °C/°F selectable (The default is °C).
- 8.Wireless Range: 197ft/60m depending on home construction materials.
9. Wireless Frequency: 433 MHz.
- 10.Power : Display: 2 X AAA 1.5V batteries; Sensor : 2 X AAA 1. 5V batteries.
- 11.Backlight: 12 Seconds auto off.
- 12.The Display Unit is capable of displaying the readings from up to 3 outdoor remote sensors to ensure you can monitor multiple locations at the same time such as your bedroom, baby's room and your outdoor temp.
(There is 1 remote sensor in the package,extra sensors sold separately).

Remarks:

The outdoor sensor start reading the exact value and transmitting the signal after 30 minutes.

PRODUCT OVERVIEW



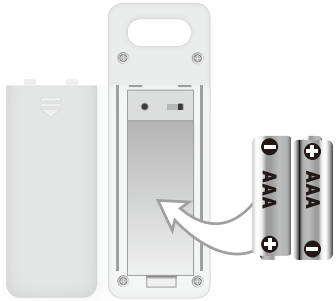
DISPLAY UNIT

1. Current Outdoor Temperature: Arrow icon indicates the direction the temperature is trending
2. Channel, there are 3 RF channels selectable
3. The Outdoor Temperature/Humidity in the past
4. The Outdoor Temperature/Humidity of last 24 hours
5. Maximum Outdoor Temperature/Humidity Record
6. Minimum Outdoor Temperature/Humidity Record
7. Current Outdoor Humidity: Arrow icon indicates the direction the humidity is trending.
8. Outdoor Sensor Low Battery Indicator
9. Current Indoor Temperature: Arrow icon indicates the direction the temperature is trending
10. Indoor temperature/humidity in the past
11. Indoor temperature/humidity over the last 24 hours
12. Maximum Indoor Temperature/Humidity Record
13. Minimum Indoor Temperature/Humidity Record
14. Display Low Battery Indicator
15. Current Indoor Humidity: Arrow icon indicates the direction the humidity is trending
16. Backlight
17. Channel Selection/Signal Sync
18. °C/°F/History Button
19. MAX/ MIN/CLEAR button

OUTDOOR SENSOR

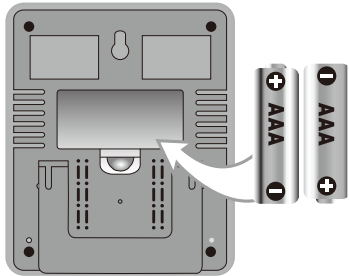
20. Integrated Hanger for easy placement
21. Wireless Signal Indicator: Flashes when data is being sent to the display unit
22. Detachable stand
23. Set the channel from 1-3.
24. Press to re-synchronize the sensor.

INSTALL OR REPLACE BATTERIES



Outdoor Sensor

- 1 Slide off the battery compartment cover.
- 2 Insert 2 X AAA batteries into the battery compartment, as shown. Follow the polarity (+/-) diagram in the battery compartment.
3. Replace the battery cover.



Display Unit

- 1 Slide off the battery compartment cover.
- 2 Insert 2 X AAA batteries into the battery compartment, as shown. Follow the polarity (+/-) diagram in the battery compartment.
3. Replace the battery cover.

Turn on the backlight

Press BACKLIGHT once to turn on the light and it will be auto off within 12 seconds without any operation.

Select Degrees Fahrenheit or Celsius

To select between degrees Fahrenheit (°F) or Celsius (°C) temperature units, press the °C/°F/History once.

Select Channel and SYNC

Press CH/SYNC once to select channel from 1-3, one display unit can connect with 3 different sensors in the same time; Press and hold CH/SYNC for 3 seconds to re-synchronize or re-pair the units. It may take a few minutes for synchronization to complete.

To Check All Time/24 HRs History data

Press and hold the °C/°F/History button for 3 seconds to check the temperature/humidity records (full records), or over the past 24 hours.

Using the MAX/MIN Records

MAX/MIN Records reflect the minimum and maximum temperature recorded since the unit was powered on, since the batteries were changed or since it was manually reset (whichever was most recent). To view the MAX record, press the MAX/MIN/CLEAR once, the MAX icon appears on the display. To view the MIN record, press the MAX/MIN/CLEAR once, the MIN icon appears on the display. To reset the MAX/MIN records, press and hold the MAX/MIN/CLEAR for 3 seconds. Dashes will display to confirm all values have been cleared.

PLACEMENT FOR MAXIMUM ACCURACY



Sensors are sensitive to surrounding environmental conditions. Proper placement of both the display unit and outdoor sensor are critical to the accuracy and performance of this product. Sensor must be placed outside to observe outdoor conditions. Sensor is rain-proof and is designed for general outdoor use, however, to extend its life place the sensor in an area protected from direct weather elements. **(Warning: The sensor must be placed vertically.)** Hang the sensor using the integrated hang holes or hanger, or by using string (not included) to hang it from a suitable location, like a well covered tree branch. The best location is 4 to 8 feet, above the ground with permanent shade and plenty of fresh air to circulate around the sensor.

HELPFUL HINTS

No outdoor sensor reception:

Replace the display unit and/or the outdoor sensor. The units must be within 197ft/60m of each other.

Make sure both units are placed at least 3 feet (9m) away from electronics that may interfere with the wireless communication(such as TVs, microwaves, computers, etc).

Outdoor temperature is flashing or showing dashes:

Bring both the sensor and display unit indoors and remove at least one battery from each.

Reinstall the battery in the outdoor sensor or display unit.

Let the unit sit within a couple feet of each other for about 20 minutes to gain a strong connection.

Inaccurate temperature

Make sure both the display unit and sensor are placed out of direct sunlight and away from any sources or vents.

CARE AND MAINTENANCE

Display Unit Care

Clean with a soft, damp cloth. Do not use caustic cleaners or abrasives. Keep away from dust, dirt and moisture. Clean ventilation ports regularly with a gentle puff of air.

Outdoor Sensor Care

Clean with a soft damp cloth. Do not use caustic cleaners or abrasives.