

---

# AeroStream H09

## User Manual



# VIVOSUN

---

# Welcome to **VIVOSUN**

Thank you for choosing Vivosun! We are committed to product quality and friendly customer service. If you have any questions or suggestions, please don't hesitate to contact us.

**Love  
what  
you  
grow™**

# H09



**Products Applicable:**

SKU

**AeroStream Intelligent Environmental Humidifier H09**

VSE-ASH09

**AeroStream Intelligent Environmental Humidifier H09**

VSE-ASH09-EU

**AeroStream Intelligent Environmental Humidifier H09**

VSE-ASH09-UK

**AeroStream Intelligent Environmental Humidifier H09**

VSE-ASH09-AU

---

# Contents

Safety Information	3
Key Features	4
Product Contents	5
Specifications	6
Installation	7
Control Panel	8
Operating Modes	13
Other Settings	17
WIFI Configuration	19
Maintainance	21
Complete Your Setup	24
Warranty	27
FCC Warning	28
ISED Statement	29

## Safety Information

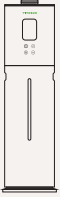
Please read the following instructions carefully before using this device. Failure to observe these safety instructions may result in injury and will release VIVOSUN of all liability and void all product warranties.

1. Ensure that your power source meets the electrical requirements specified for this product.
2. Familiarize yourself with all instructions before proceeding with the installation and operation of this product.
3. Do not dismantle or attempt to repair or adjust the unit without authorization, as this will invalidate the product's warranty.
4. Use ONLY distilled water and avoid pouring water into the central pipe to maintain proper functionality of this device.
5. Always turn off and unplug the humidifier before installing, cleaning, or moving it. When not in use, unplug the humidifier from the power outlet.
6. Do not touch the water in the tank or any components in the water with any part of your body while the humidifier is operating.
7. Do not operate the humidifier without water. Doing so may damage the unit.
8. Do not direct the mist outlet towards electrical appliances, such as clip-on fans, lights, or inline fans.
9. Do not cover power cords with rugs or other fabric materials.
10. When cleaning, do not allow water to flow or splash into the interior of the unit to avoid damaging internal components.
11. Do not place this product in potentially hazardous environments such as flammable, explosive, electrical, or chemically-laden atmospheres.  
Place it on a flat, sturdy surface to keep it stable and prevent tilting and water spillage.  
Keep it away from heat sources such as stoves and direct sunlight.  
Place it in a room-temperature environment to avoid damage from cold temperatures.
12. Keep the humidifier out of reach of children.



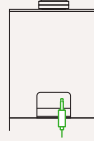
---

# Key Features



## User-friendly Design

Opaque black water tank and ergonomic design suitable for various usage scenarios. Top-fill design for easy use.



## Precise Readings

External temperature and humidity probes can be connected for precise, targeted environmental readings.



## Versatility

Various accessories available to suit different usage scenarios.



## Phantom Mode

Turn off the screen while operating to prevent light pollution.



## Low Water Level Alert

Real time alert to ensure uninterrupted operation

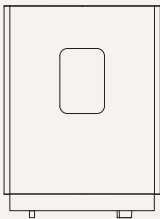
# Product Contents

## H09

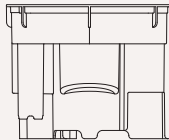


# x9 pieces

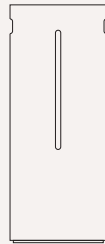
**Top Module**  
x 1 pc



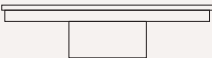
**Mist Channel**  
x 1 pc



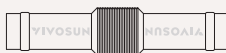
**Water Tank**  
x 1 pc



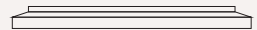
**Top Cover**  
x 1 pc



**Flexible Hose**  
x 1 pc



**Water Tank Base**  
x 1 pc



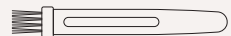
**Mist Outlet**  
x 1 pc



**Temperature & Humidity Sensor 3m**  
x 1 pc



**Cleaning Brush**  
x 1 pc



---

## Specifications

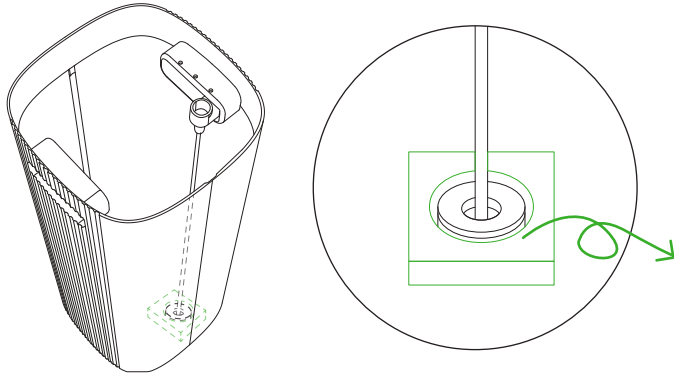
Dimensions	7.1*7.1*25.4inch 180*180*645mm
Net/Gross Weight	5.9lbs/7.7lbs 2.68kg/3.5kg
Water Tank Capacity	2.38 gal (9L)
Max Humidity Output Rate	15.22 fl oz/h (450 mL/h)
Voltage	100-240V AC
Frequency	50/60Hz
Wattage	32W
Noise Level	≤35 dBA
Operating Temperature Range	41°F to 122°F (5°C to 50°C)
Operating Humidity Range	20%-99% RH



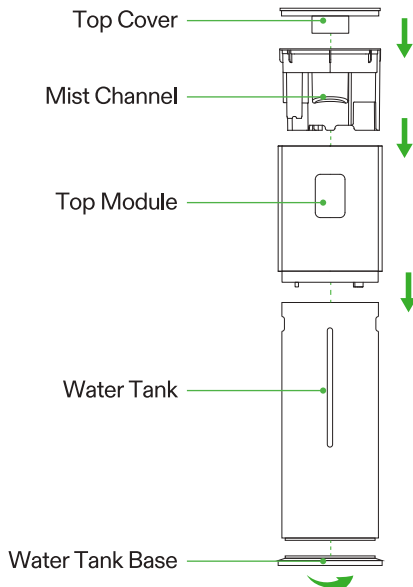
---

# Installation

**STEP 1** Please remove the AeroStream from its packaging, take off the protective bag, and ensure that the protective foam from water pipe filter is removed inside water tank.



**STEP 2** Assemble the Top Cover&Mist Channel, Top Module, Water Tank, and Water Tank Base.



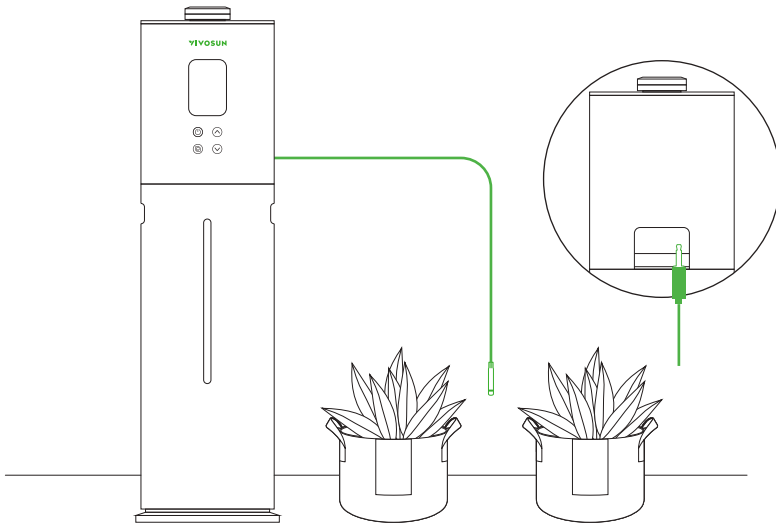
---

# Installation

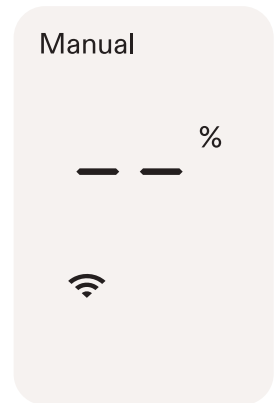
**STEP 3** Insert the temperature and humidity probe into the 2.5mm jack located to the right of the power cord.

Point the probe at the desired area and secure it.

**Tip:** When inserting the jack, make sure to hear a distinct clicking noise. This sound confirms that the jack is properly and securely locked into place.



When the temperature and humidity probe is not connected, the screen will display "--".

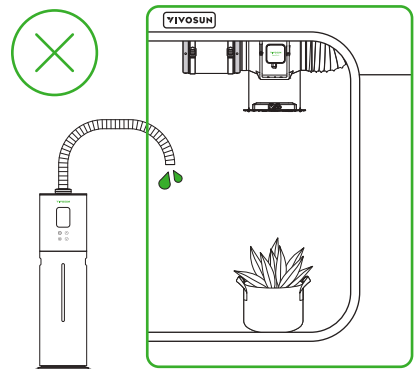
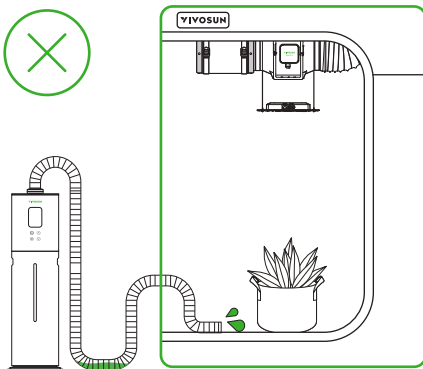
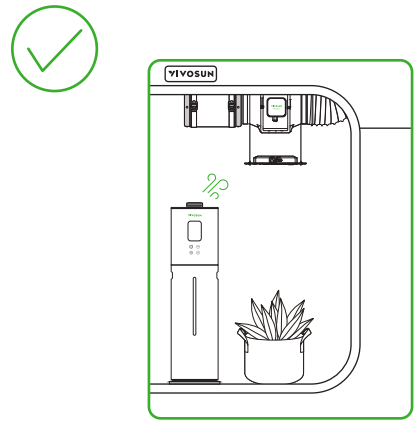
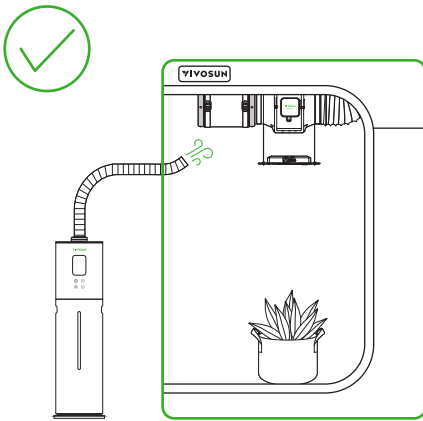


# Installation

**STEP 4** Depending on the specific use scenario, attach either the Mist Outlet or the Flexible Hose.

When using the flexible hose, please note the following:

1. Avoid creating U-bends in the hose, as this may cause water accumulation, leading to spillage and obstructing mist emission.
2. The mist outlet must always be pointed upwards.
3. Dry the hose after use.



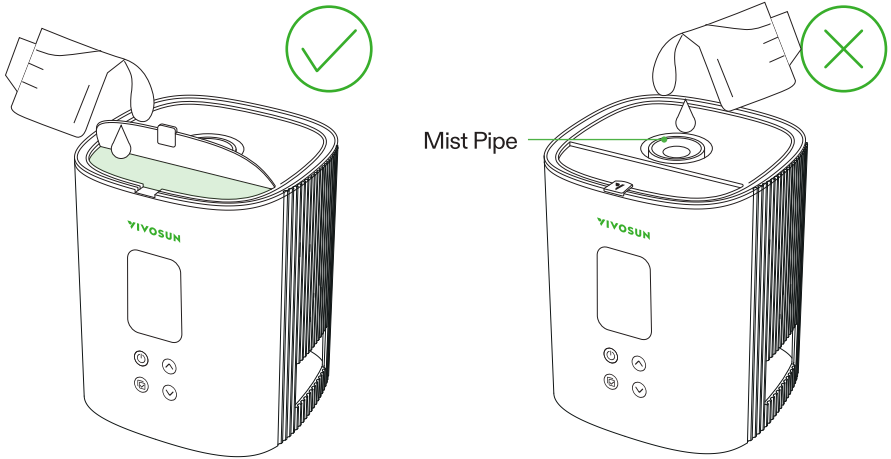
---

# Installation

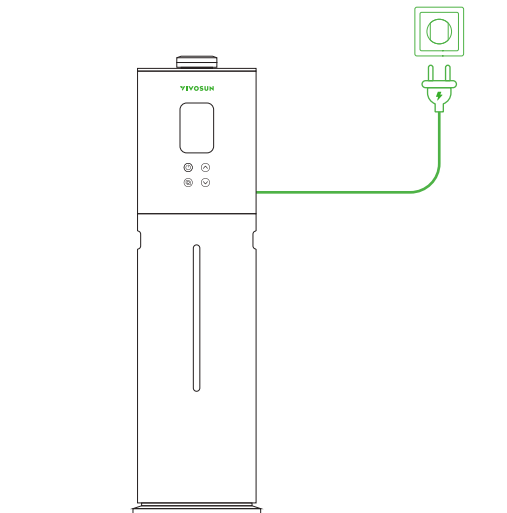
**STEP 5** Slowly fill the water tank, paying close attention to the water level to avoid overflow and spillage.

**Caution: DO NOT fill water into the mist pipe.**

**Note:** For optimal performance, use DISTILLED WATER ONLY. Clean and maintain the AeroStream on a weekly basis.



**STEP 6** Plug in the power cord and enjoy the AeroStream.



# Control Panel



## On/Off Button

Press to turn On.

Press and hold for 3 seconds to turn Off.



## Menu/Confirm Button

Press and hold the Menu Button to enable mode selection between Manual, Cycle, Auto and Timer. Press again to confirm.



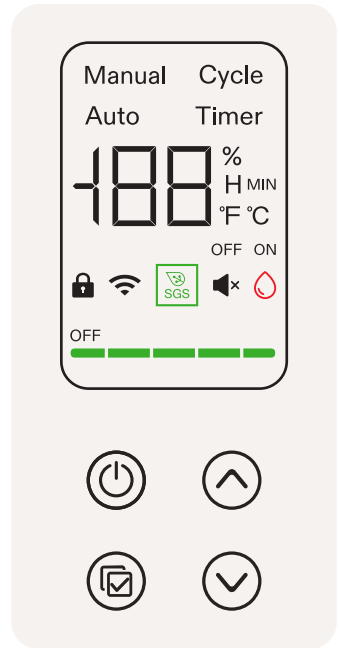
## Up Button

Press the Up Button to increase value of current setting (Mist Level, Time, etc.).



## Down Button

Press the Down Button to decrease value of current setting (Mist Level, Time, etc.).



# Control Panel

## 1. Mist Level

Current Mist Level.

## 2. Operating Modes

Manual, Cycle, Auto, Timer.

## 3. Probe Reading

Alternately displays the current humidity and temperature.

Displays remaining time in Cycle and Timer mode.

## 4. Status Icons

Displays the setting status, including (cloud) lock, Wifi, SGS connectivity and mute.

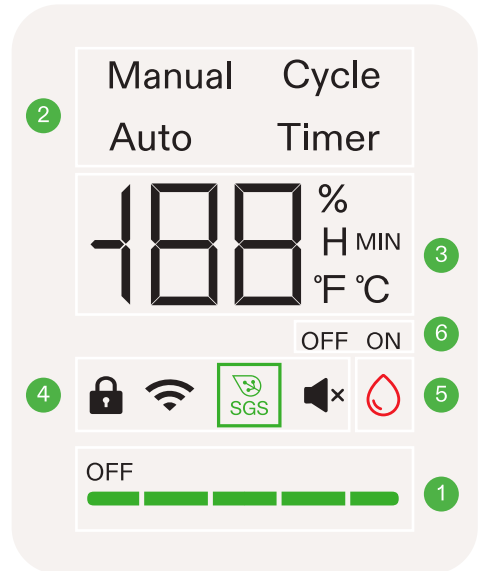
- No Wifi Icon indicates the AeroStream is offline
- Wifi Icon will flash when searching and connecting to a network.

## 6. Operational Status

OFF indicates the device is paused.

ON indicates it is running.

Operational duration is displayed when setting parameters in Cycle and Timer modes.



## 5. Water Level Icon

Displays the water level status of the device.

When water level is low, the icon lights up.

---

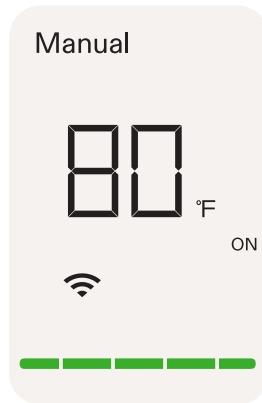
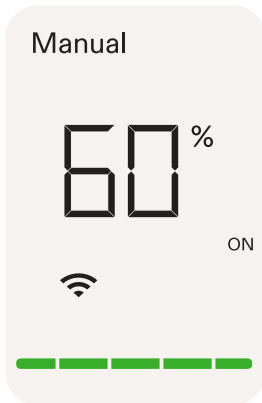
# Operating Modes

## Manual Mode:

The device will operate according to the mist level set in Manual Mode.

Press and hold Menu button to enter Mode Selection. Press the Up or Down button to select Manual Mode and press Menu button again to confirm. Then set mist level using the Up/Down button and press Menu button to activate Manual Mode.

The screen will alternately display the mist level, current humidity, and temperature in this mode.



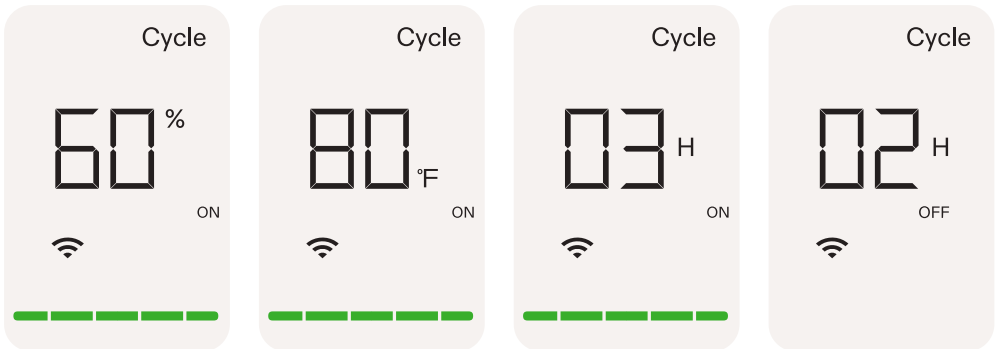
# Operating Modes

## Cycle Mode:

The device will cycle and run continuously according to the set mist level and run/pause time.

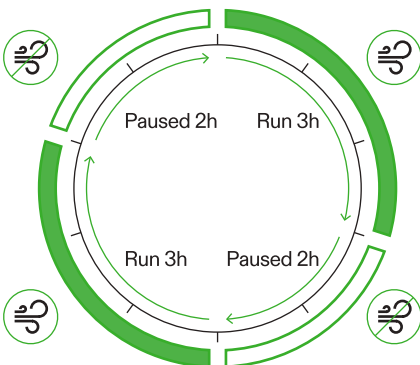
Press and hold Menu button to enter Mode Selection. Press the Up or Down button to select Cycle Mode and press Menu button again to confirm. Set operating and rest duration (On and Off duration) by pressing Up/Down button and press Menu button to confirm. Then set mist level using the Up/Down button and press Menu button to activate Cycle Mode.

The screen will alternately display the mist level, current humidity, temperature, and remaining run/pause time of the device in this mode.



\* 3H ON: Under this configuration, the device will operate for 3 hours.

\* 2H OFF: Under this configuration, the device will pause for 2 hours.



\* The device only displays duration setting accurate to the hour and rounds up to the nearest whole number. For precise minute settings, please refer to the Vivosun app.



# Operating Modes

## Auto Mode:

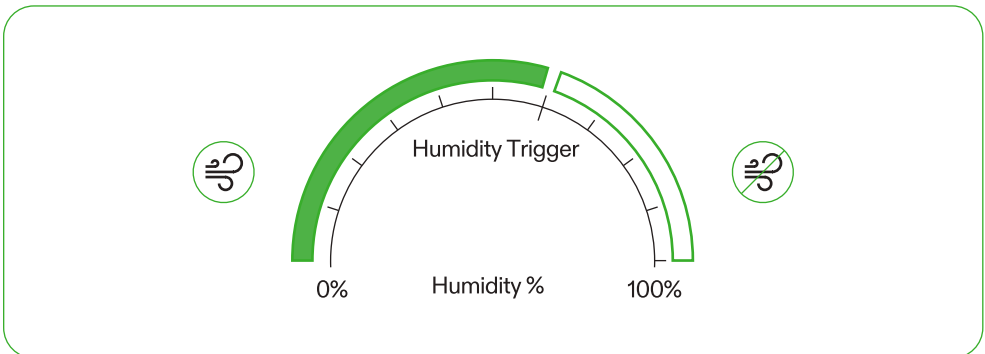
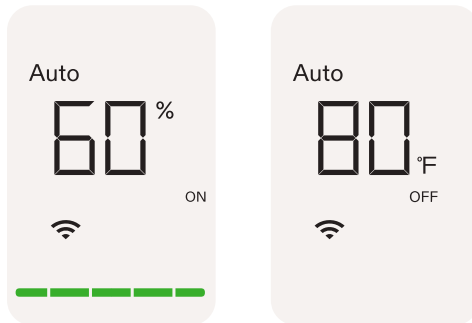
The device will operate according to the set mist level and humidity threshold (Low Humidity Trigger).

Once humidity falls below the Low Humidity Trigger, the humidifier will start operating.

Conversely, once humidity exceeds the Low Humidity Trigger, the humidifier will stop operating.

Press and hold Menu button to enter Mode Selection. Press the Up or Down button to select Auto Mode and press Menu button again to confirm. Set target humidity by pressing Up/Down button and press Menu button to confirm. Then set mist level using the Up/Down button and press Menu button to activate Auto Mode.

The screen will alternately display the mist level, current humidity, temperature, and operating status in this mode.



# Operating Modes

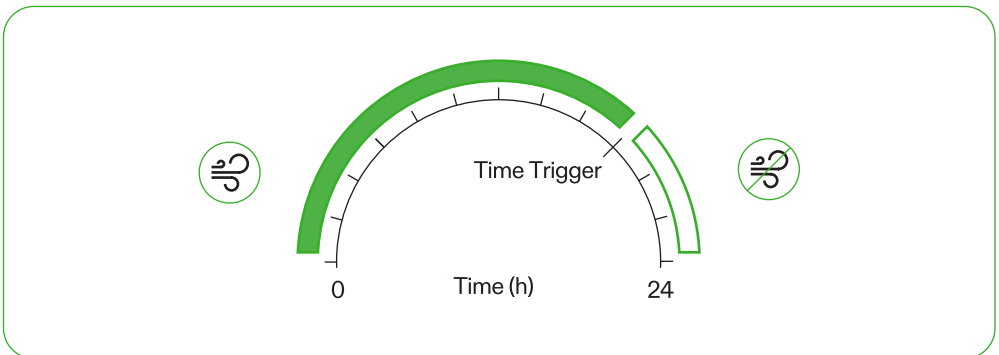
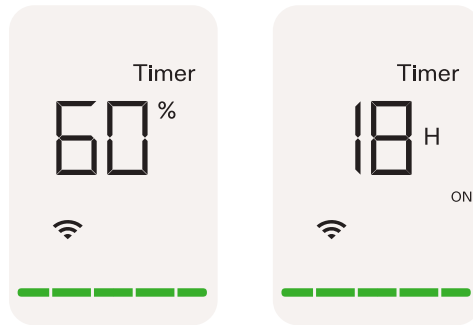
## Timer Mode:

The device will operate according to the set mist level and time.

After timer ends, the device will stop operating.

Press and hold Menu button to enter Mode Selection. Press the Up or Down button to select Timer Mode and press Menu button again to confirm. Set desired operating duration by pressing Up/Down button and press Menu button to confirm. Then set mist level using the Up/Down button and press Menu button to activate Timer Mode.

The screen will alternately display the mist level, current humidity, temperature, and remaining operating time of the device in this mode.



\* The device only displays duration setting accurate to the hour and rounds up to the nearest whole number. For precise minute settings, please refer to the Vivosun app.

---

## Other Settings

Function	Operation
Switch Temp Unit	Press and hold Up Button to switch between °C and °F.
Mute Device	Press and hold Down Button to mute/unmute.
Device Lock	Press and hold On/Off and Up Button for 3 seconds to lock/unlock device. Note: When device is locked, settings cannot be adjusted.
Phantom Mode (Hide Screen)	Press and hold On/Off and Up Button for 3 seconds to lock device first; Press On/Off Button again to enter Phantom Mode (Hide Screen). Press any button to light up the control panel.
Exit Recipe	Press and hold Menu Button for 3 seconds to exit Recipe while Recipe is running.
Screen Auto-Off	Set Panel Auto-Off via Vivosun App
Factory Reset	Press and Hold On/Off and Menu Button for 3 seconds to reset device to factory settings.

---

# Other Settings

## Low Water Level Alert

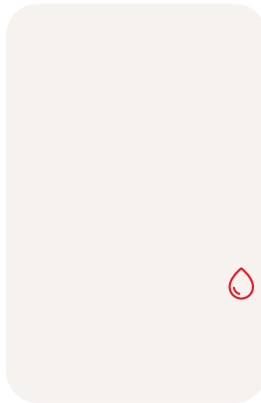
This Alert will display when water level is low. Device will pause operation when in this status until water is refilled.

If the device is connected to Vivosun App, you will receive a low water level push notification.

Refill water and press On/Off Button to resume operation.

\*At this point, the device will draw water from the water tank to the top module. The alert will remain illuminated until a sufficient amount of water is available to initiate operation.

Alert Icon will flash if pressing any button.



# WiFi Configuration

## Connect AeroStream to VIVOSUN APP

### Step 1: Download VIVOSUN APP

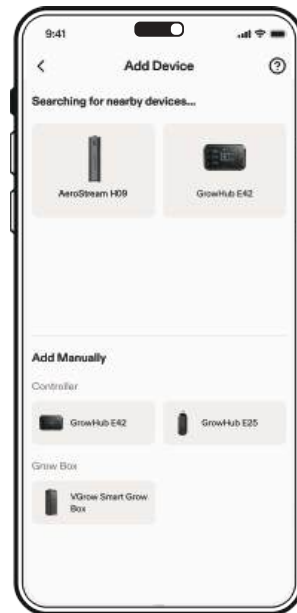
Search "VIVOSUN" in the Apple App Store or in the Google Play Store to download the VIVOSUN app.



### Step 2. Add AeroStream

Tap "+" or ⊕ to add AeroStream. When connecting to VIVOSUN app, 📶 will flash on the control panel.

**Note:** Make sure you have a 2.4G WiFi connection, and that Bluetooth is enabled on your phone.



---

# WiFi Configuration

## Step 3. Name Device

After connecting successfully, you can rename your device.

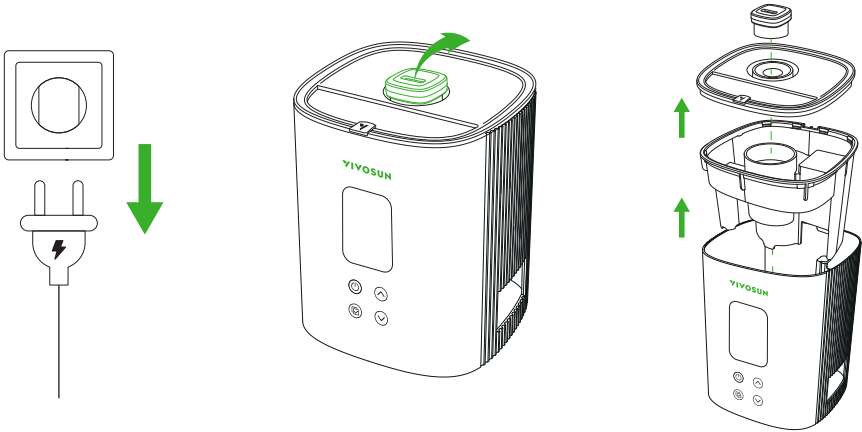


# Maintenance

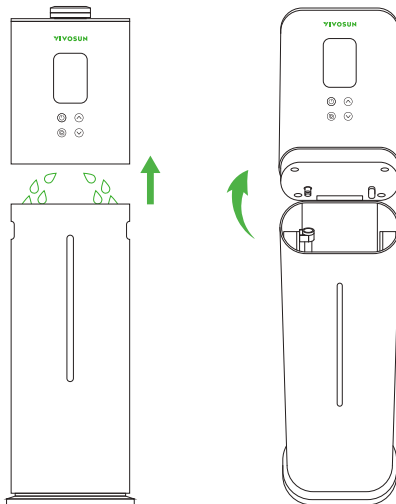
Clean and maintain on a weekly basis;

For optimal performance, use DISTILLED WATER ONLY.

- STEP 1**
- Turn off the AeroStream and unplug it from the power outlet.
  - Detach the Mist Outlet / Flexible Hose.
  - Remove the Top Cover and Mist Channel. Place them in a sink for cleaning.



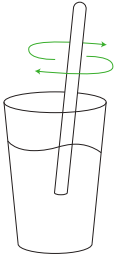
- STEP 2**
- Lift and tilt the top module.
  - Pour the water from the top water reservoir through the funnel into the water tank.
  - Empty any remaining water from the water tank.



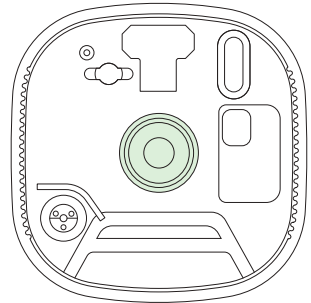
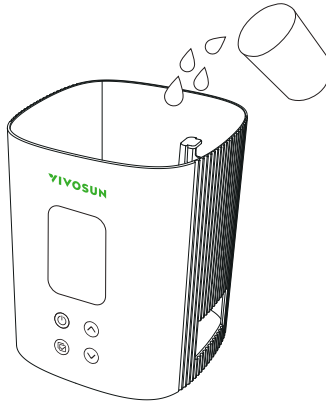
---

# Maintenance

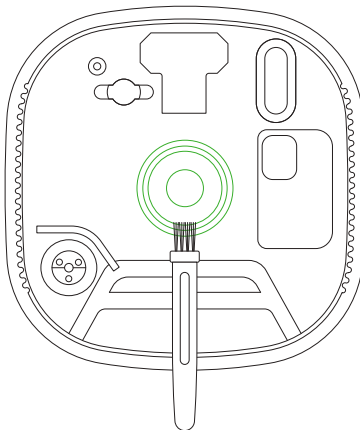
- STEP 3**
- Mix half a cup of distilled water and half a cup of vinegar in a 1:1 ratio.
  - Pour the mixture into the top module.
  - Wait 10 minutes.



Distilled water + Vinegar



- STEP 4** Use the included cleaning brush to gently scrub the surface ionizers to remove any residue or debris.





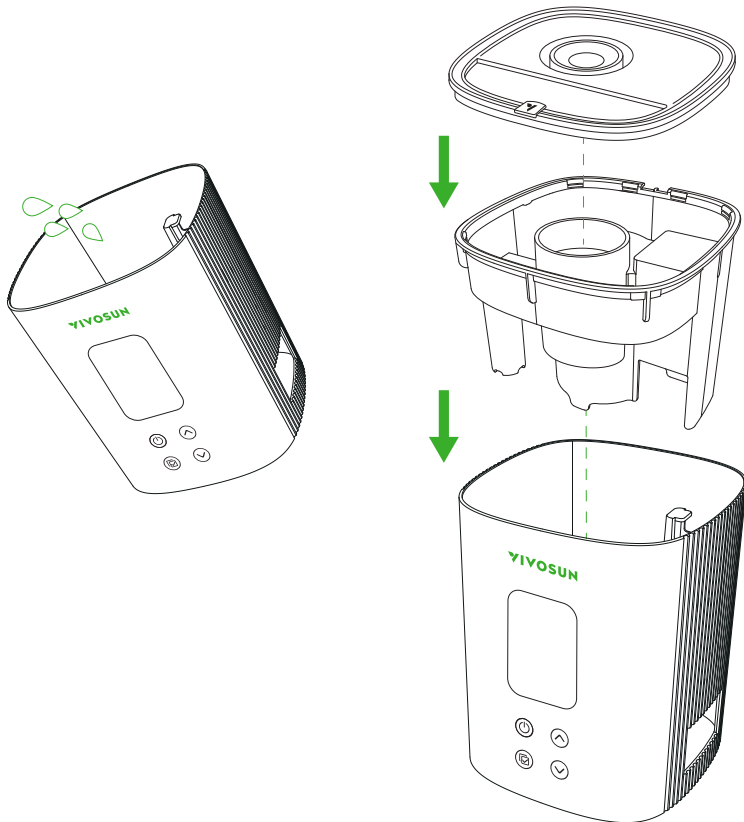
---

# Maintenance

- STEP 5**
- Pour the mixture out of the top module.
  - Use a clean towel to wipe the surface of the top module and the water tank.
  - Reassemble the water tank, top module, mist channel, Top Cover, and Mist Outlet/Flexible Hose in sequence.

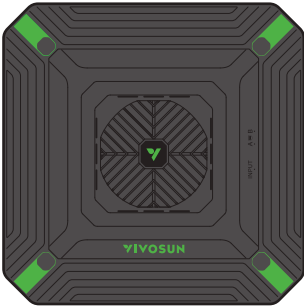


After cleaning, please patiently wait for the device to draw water from the water tank to the top module, similar to the initial startup process.



---

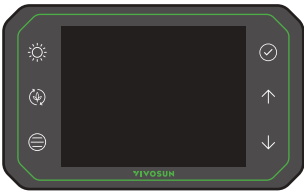
# Complete Your Setup



## LED GROW LIGHT

AeroLight/VS/VSX/VSF

- 100W-645W high-powered LED grow light
- High PPE efficacy with Samsung LED
- Full spectrum including FR/UV
- 0-100% dimming with daisy-chain capability
- ETL/CE/FCC certified
- Compatible with GrowHub controller



## CONTROLLER

GrowHub E42/E42A

- WiFi remote control with VIVOSUN App
- Complete control of lights, inline fans and circulation fans
- Temp./Humidity monitoring and control
- Compatible with VIVOSUN devices such as AeroLight, AeroZesh, VS series lights
- Professional controller designed for growers of all levels



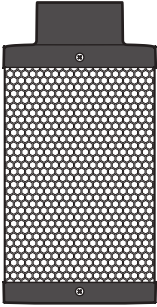
## INLINE DUCT FAN

AeroZesh

- Efficient airflow with high static pressure
- 4" / 6" / 8" for different sized tents
- Energy efficient and quiet EC motor
- Dual ball bearings with long lifespan
- Precise fan speed adjustment by PWM
- Compatible with GrowHub controller for multiple professional operation modes

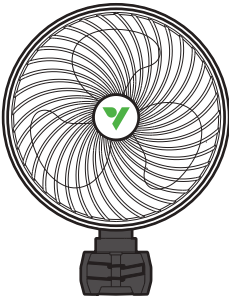
---

# Complete Your Setup



## CARBON FILTER

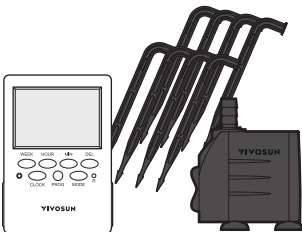
- Eliminates odors and refreshes air
- Premium-grade Australian charcoal
- High absorption efficiency and long lifespan
- 4" /6" /8" compatible with different inline fans



## CLIP-ON CIRCULATION FAN

AeroWave

- Patented clip-on design
- Automatic oscillation
- Adjustable fan speed
- High airflow and energy efficient
- Compatible with GrowHub controller (E Series)



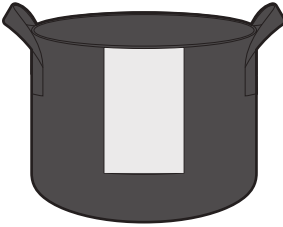
## IRRIGATION SYSTEM

FlexFeed

- Automated drip irrigation system
- Professional irrigation settings
- Precise and stable irrigation
- Quiet and efficient
- Easy to install

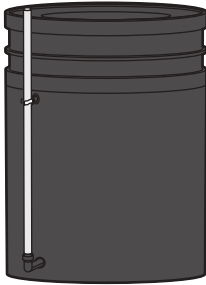
---

# Complete Your Setup



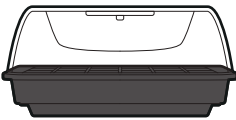
## GROW BAG

- Various sizes ranging from 1-30 gallons
- 300G durable nonwoven fabric
- Root breathable and air pruning



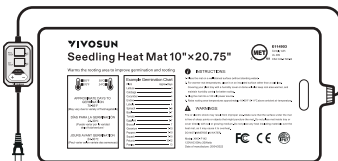
## DWC HYDROPONIC SYSTEM

- DWC+Top Dripping hydroponic system
- Efficient air-driven top dripping technology
- One or four 5-gallon bucket(s)
- Suitable from seedling to harvest
- Easy to install and automated operation



## PROPAGATION TRAY & HEAT MAT

- Propagation tray and heat mat kit
- Transparent dome with humidity adjustment
- Heat mat with precise temperature control
- Easy and safe to use



For additional information about our products and personalized recommendations for a growing system tailored to your needs, please don't hesitate to get in touch with us.

---

# Warranty

VIVOSUN provides a one-year warranty against defects on AeroStream Humidifiers purchased directly from us or through our authorized dealers. This policy serves as our commitment to promptly address any manufacturing defects or premature breakage that may occur during normal use of our products.

Our warranty covers the replacement or refund of purchases that exhibit material defects within one year of the original purchase date. In such events, customers may contact us to initiate the claim process. We will need proof of purchase to verify coverage eligibility.

This policy does not extend to products that have been misused, abused, or purposefully damaged. It also does not cover normal wear and tear or cosmetic defects such as minor scratches.

Customers can rest assured knowing that our products undergo rigorous quality testing procedures. This one-year warranty reflects our confidence in the durability of our products under normal use.



If any product defects are found, customers are encouraged to contact us immediately. Your satisfaction is our priority, and we are committed to resolving any issues in a professional and timely manner.

---

## FCC Warning

This equipment has been tested and found to comply with the limits for a Class B digital device, pursuant to part 15 of the FCC Rules. These limits are designed to provide reasonable protection against harmful interference in a residential installation. This equipment generates, uses and can radiate radio frequency energy and, if not installed and used in accordance with the instructions, may cause harmful interference to radio communications. However, there is no guarantee that interference will not occur in a particular installation. If this equipment does cause harmful interference to radio or television reception, which can be determined by turning the equipment off and on, the user is encouraged to try to correct the interference by one or more of the following measures:

- Reorient or relocate the receiving antenna.
- Increase the separation between the equipment and receiver.
- Connect the equipment into an outlet on a circuit different from that to which the receiver is connected.
- Consult the dealer or an experienced radio/TV technician for help.

Caution: Any changes or modifications to this device not explicitly approved by manufacturer could void your authority to operate this equipment.

This device complies with part 15 of the FCC Rules. Operation is subject to the following two conditions:

(1) This device may not cause harmful interference, and (2) this device must accept any interference received, including interference that may cause undesired operation.

This equipment complies with FCC radiation exposure limits set forth for an uncontrolled environment. This equipment should be installed and operated with minimum distance 20cm between the radiator and your body

---

# ISED Statement

**English:** This device contains licence-exempt transmitter(s)/receiver(s) that comply with Innovation, Science and Economic Development Canada's licence-exempt RSS(s).

Operation is subject to the following two conditions:

(1) This device may not cause interference.

(2) This device must accept any interference, including interference that may cause undesired operation of the device.

**French:** Cet appareil contient des émetteurs/récepteurs exempts de licence qui sont conformes aux CNR exempts de licence d'Innovation, Sciences et Développement économique Canada. Le fonctionnement est soumis aux deux conditions suivantes :

(1) Cet appareil ne doit pas causer d'interférences.

(2) Cet appareil doit accepter toute interférence, y compris les interférences susceptibles de provoquer un fonctionnement indésirable de l'appareil.

This device meets the exemption from the routine evaluation limits in section 2.5 of RSS 102 and compliance with RSS 102 RF exposure, users can obtain Canadian information on RF exposure and compliance.

cet appareil est conforme à l'exemption des limites d'évaluation courante dans la section 2.5 du cnr - 102 et conformité avec rss 102 de l'exposition aux rf, les utilisateurs peuvent obtenir des données canadiennes sur l'exposition aux champs rf et la conformité.

This equipment complies with Canada radiation exposure limits set forth for an uncontrolled environment.

This equipment should be installed and operated with minimum distance 20cm between the radiator & your body.

Cet équipement est conforme Canada limites d'exposition aux radiations dans un environnement non contrôlé.

Cet équipement doit être installé et utilisé avec une distance minimale de 20 cm entre le radiateur et votre corps.



Designed by **VIVOSUN** in California.  
Made in China