



Love  
what  
you  
grow™

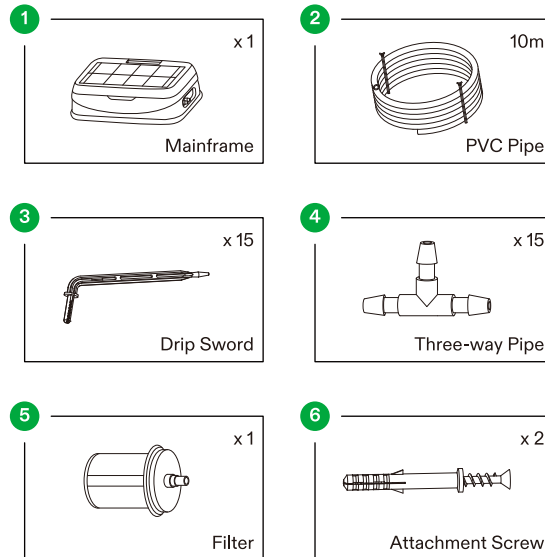
Welcome to **VIVOSUN**

Thank you for choosing VIVOSUN. We are committed to product quality and friendly customer service. If you have any questions or suggestions, please don't hesitate to contact us.

## SPECIFICATIONS

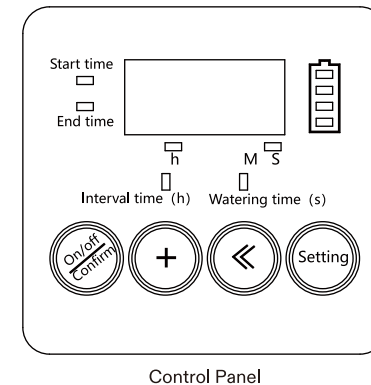
Model No: SD01A  
 Pump Power: DC3.7V 3W  
 Qmax: 800 ml/min  
 Solar Panel Power: 1.5W  
 Battery: 3.7V/2000mAh  
 Charger Spec: DC 5V/1000mA  
 Connector: Micro USB  
 Watering frequency: 1-24 times/day  
 Watering time: 1-99 sec/time

## PARTS LIST



## INSTRUCTIONS

Default settings: Start time: 8:01, End time:22:00,  
 Interval time: 10hr, each Watering cycle: 60sec.



### 1. Setting Procedures

1. Press the "Switch/Confirm" button for 2 seconds to turn on and display the current time. The product begins watering automatically, according to the preset parameters. Press the "Switch/Confirm" button again for 2 seconds to turn off the device.

## INSTRUCTION

2. Setting Parameters: Press the "Settings" button to enter the setting state. (Settings will be automatically saved if there is no interaction with the device for more than 5 seconds. The setting page will exit and the device will return to the current working state.)

- Setting the interval time (The left two numeric LED displays (0-24) hours). At this time, the two numbers displayed on the LED that will flash, the "Interval time" and "h" will light up at the same time. Press "+" to add 1 to the interval time. When you have completed your settings, click the "Settings" button to enter the "Watering Duration" setting. (If you do not set the watering time, you can click the "Switch/Confirm" button to directly save and exit the setting and return to the working state).
- Setting the watering time (the two numbers displayed on the LED screen on the right-hand side will display 0-99 seconds). At this time, the two numbers on the LED screen on the right-hand side will flash, "Watering time" and "S" will light up at the same time, click "+" to add 1 to the total. When the setting is complete, click the "Setting" button again to enter the "Start Time" setting. (If you do not need to set the start time, you can click the "Switch/Confirm" button to save and exit the settings).

## INSTRUCTION

- Setting the start time (the two Numeric LED on the left-hand side of the display will show hours 0-24; the two Numeric LED on the right display minutes 0-60). While setting the start time, the Numeric LED on the right-hand side will flash continuously. "Start time," "m," and "h" will light up at the same time. Click "+" to increase the minute by 1. Click the "<" key to jump to the hour setting; click "+" to increase the hour by 1. When the setting is complete, click the "Settings" button to enter the "End Time" setting. (If you do not set the end time, you can click the "Switch/Confirm" button to save and exit the setting.)
- Similarly to step ③, you can set the end time for the device. Follow the same process as in step 3. Once you have completed the settings, click the "Settings" button again to enter the "Current Time" setting. (If you do not set the current time, you can click the "Switch/Confirm" key to save and exit the setting.)

## INSTRUCTION

- Setting the current time (the two numeric LED on the left display hours 0-24; the two Numeric LED on the right-hand side will flash continuously. "Start time," "m," and "h" will light up at the same time. Click "+" to increase the minute by 1. Click the "<" key to jump to the hour setting; click "+" to increase the hour by 1. When the setting is complete, click the "Settings" button to return to the first parameter setting. (If you do not set the following parameters, you can click the "Switch/Confirm" button to save and exit the setting.)

### 2. Battery Display

Four grids indicate 100%-75% charge; three grids indicate 75%-50% charge; two grids indicate 50%-25% charge; one grid indicates below 25% charge and the LED light will flash at that time.

### 3. Note:

"Interval time" refers to the intervals between watering cycles;  
"Watering time" refers to the amount of time water is being emitted.  
"Start time" refers to the time of the first watering cycle;  
"End time" refers to the time when watering ends each day.

## INSTRUCTIONS

Correcting the Time: Adjust the time to the current time. When the "Interval" setting is greater than "End Time" minus "Start Time," water only once a day (water only at the time of the start time).

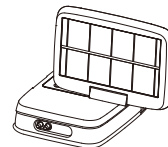
## INSTALLATION NOTES

- After setting the product parameters, place it in an area with abundant sunlight.
- Assemble the accessories and then connect the host. (First, assemble the PVC pipe and the filter screen, and then connect it to the water inlet of the pump. Second assemble the PVC pipe and the three-way pipe, then assemble it with the dripping sword, and finally connect it to the water outlet of the pump.)
- Insert the drip sticks into the soil of the flower box respectively, and then put the filter screen into the bucket.

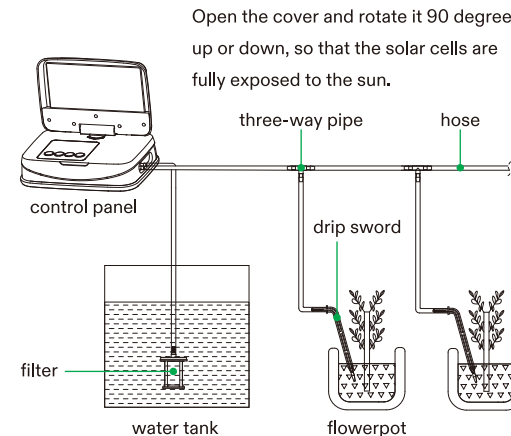
## INSTALLATION NOTES



Smart watering device



Open the lid and rotate it 90 degrees to the left or right, so that the solar cells are fully exposed to the sun.



Open the cover and rotate it 90 degrees up or down, so that the solar cells are fully exposed to the sun.

## NOTES

- Siphoning is a normal physical phenomenon. When the water level is higher than the ground, the machine stops working. Water will continue to flow out due to air pressure, resulting in over-watering or even overflow. The siphon is only affected by the height of the water surface and the ground plug, not the height of the machine. Be careful to avoid siphoning.
- This product is rainproof but should not be immersed in water.
- When the sun is strong enough, the solar panel may not be fully charged, so you can use the adapter to supply power. This is more likely to happen in winter or when the day is short.