

VIVOSUN



AeroLab TH USER MANUAL

Love what you grow™

Welcome to **VIVOSUN**

Thank you for choosing VIVOSUN. We are committed to product quality and friendly customer service. If you have any questions or suggestions, please don't hesitate to contact us.

PRODUCTS INCLUDED IN THIS MANUAL:

Product	SKU
AeroLab THB1	VS-THB1
AeroLab THB1S	VS-THB1S

CONTENTS

Safety Information	1
Key Features	2
Product Contents	4
Specifications	8
Installation	10
Smart Grow System	14
Operation	16
Complete Your Setup	28
Warranty Information	32

SAFETY INFORMATION



Please read the following instructions carefully before using this device. Failure to observe these safety instructions may result in serious injury and will release VIVOSUN of all liability and void all product warranties.

1. Follow the instructions for the product.
2. Do not expose the product to direct heat.
3. Do not use the product in Microwave Oven.
4. The sensor is an accurate Swiss temperature and humidity MEMS sensor, do not use the product in the rain or immerse the product in the water.
5. The sensor detect the air temperature and humidity through the side holes, do not cover them.
6. Keep the battery away from children and if you don't use the product for a long time, please take out the batteries.
7. Do not disassemble or modify the device without VIVOSUN's direction may cause damage to the device and will void the warranty.

KEY FEATURES

MAX/MIN DESIGN

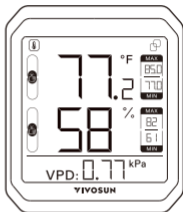
MAX/MIN to show the highest and lowest temperature & humidity in a day

VISUALIZED VPD DESIGN

Special and visualized VPD design on display for growers

COMFORT RANGES

3 adjustable comfort ranges for temperature and humidity to show the environment condition



KEY FEATURES

REMOTE CONNECTIONS

Support BLE 5.0 and support connection to VIVOSUN GrowHub E42/E42A/E25 to get WiFi Gateway

DUAL CHANNELS WITH SWISS SENSOR

Accurate Build-in Swiss Temperature/Humidity Sensor.
Optional external sensor probe for dual channels

MULTIPLE INSTALLATION METHODS

Support mounting on the wall, kickstanding and hanging in tent



PRODUCT CONTENTS



Smart Controller
x 1pc



AAA Batteries
x 3pcs



Wire Tie*
x 1pc



Expansion Screws
x 2pcs



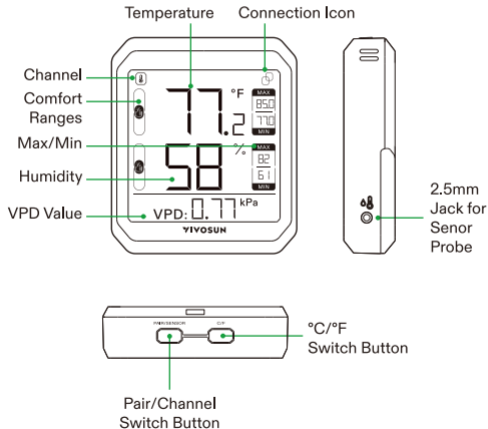
Temperature/
Humidity Sensor*
(3m)



Strap
x 1pc



* is only included in AeroLab THB1S.

PRODUCT CONTENTS



PRODUCT CONTENTS

Channel

 for build-in sensor. If external temperature/humidity sensor is connected, you can switch to external sensor .

MAX/MIN

Maximum/Minimum temperature and humidity readings in the past.

Comfort Ranges

The following is the default setting for comfort range icons.



79°F < Temp.

68°F ≤ Temp. ≤ 79°F

Temp. < 68°F



60% < Humid.

30% ≤ Humid. ≤ 60%

Humid. < 30%

PRODUCT CONTENTS

VPD Value

VPD value is displayed directly to growers for reference.

Pair/Channel Switch Button

Press the button while pairing your device to the VIVOSUN App. If the external temperature/humidity sensor is connected you can press the button to switch the channel.

°F/°C Switch Button

Press this button to switch between °F and °C.

You can also long press this button for 3 seconds to clear the history data.

SPECIFICATIONS

	VS-THB1	VS-THB1S
Product Dimensions	3.31 * 2.81 * 0.79 in.	
Display	2.33 * 2.33 in. LCD Screen	
Connectivity	BLE 5.0	
Working Temperature Range	-4 °F-149°F(-20°C-65°C)	
Working Humidity Range	0-100%RH	
Temperature Accuracy	±0.9°F	
Humidity Accuracy	±5% RH	
Bluetooth-Enabled Range	50m (no obstructions)	
Data Refresh Speed	2s	

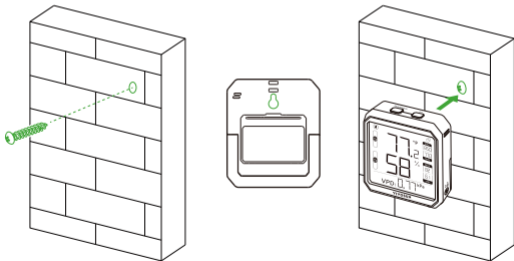
SPECIFICATIONS

	VS-THB1	VS-THB1S
Battery	3 * AAA battery	
Battery Life	1 year	
Data Storage	2 year cloud storage	
App	Vivosun App	
Data Export	Support on App	
Alert	Support on App	
Remote Connection	Support connection to VIVOSUN GrowHub E42/E42A/E25	
Installation	Mounting, Kick Standing, Magnet & Hanging	
Sensor Probe Length	---	3m

INSTALLATION

Wall Mounting

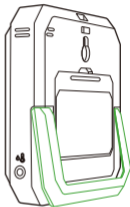
Drill a hole where you plan to mount the device. Then push the plastic expansion pipe in and screw the expansion screw. Now you can hang the device directly on the screw by sliding the slotted hanging hole over the screw and then allow the device to hang down.



INSTALLATION

Kickstanding

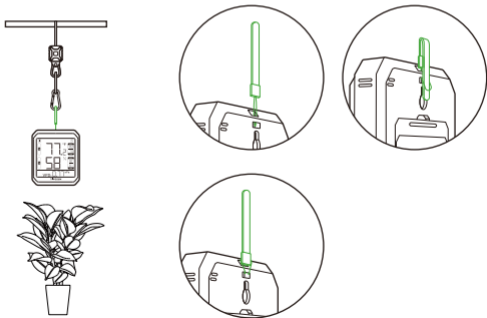
You can place the device on a level surface by the stand behind the device.



INSTALLATION

Hanging In Tent

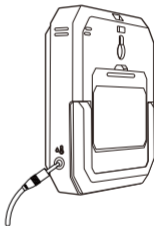
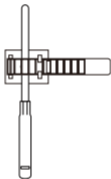
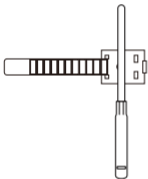
Thread the strap through the hole behind the device. Then you can hang the device in tent or wherever you want. It is better to hang the device above the canopy of plants to monitor the canopy temperature and humidity more accurately.



INSTALLATION

Temperature/Humidity Sensor Probe

Plug the temperature/humidity sensor probe into the 3.5mm jack. Then you can use the wire tie to secure the sensor probe.



SMART GROW SYSTEM

The VIVOSUN Smart Grow System is a fully automatic grow system empowering growers by making growing easier and more convenient. The system includes the VIVOSUN GrowHub Controller, the VIVOSUN App, the AeroLight, the VS Grow Light series, the AeroZesh, the AeroWave E6 circulation fan, and a number of forthcoming smart devices. The Vivosun SGS provides automatic equipment and climate control, remote monitoring, personalized recipes, all with an intuitive UI, that helps everyone grow what they love.



AeroZesh



AeroLight



Humidifier



Control Directly & Wirelessly



AeroWave



Grow Light



Control Wirelessly



Control Wirelessly



Aerolab



GrowHub™

Select one or more GrowHub controllers to connect your devices.



Connect & Control other brand devices using GrowHub



ON/OFF control on general devices

YIVOSUN



Smart Grow System

Connect all devices through GrowHub & the APP

OPERATION

Add the Device to VIVOSUN APP

Step 1. Download VIVOSUN APP

Search "VIVOSUN" in the Apple App Store or in the Google Play Store to download the VIVOSUN App. You can add AeroLab Thermometer Hygrometer to your Garden to work with your GrowHub Controller E42/E42A/E25 if you have.

Step 2. Turn on the Bluetooth

Turn on the VIVOSUN App and make sure the Bluetooth of your phone is turned on.



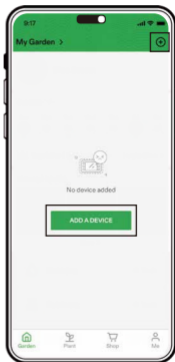
OPERATION

Step 3. Remove the battery sleeve

Take off the battery sleeve, then the sensor starts to work.

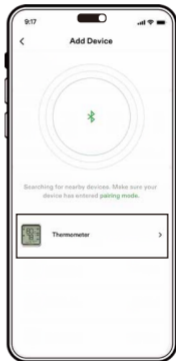
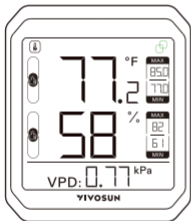
Step 4. Add device

Tap "ADD A DEVICE" or ⊕ to add the device. Long press PAIR/SENSOR button for 3 seconds to enter connection mode. You can see the connection icon on the device. Then this device will be showed on the app to do connection. Select the device, the App will connect the device automatically.



OPERATION

Step 4



OPERATION

Step 4



OPERATION

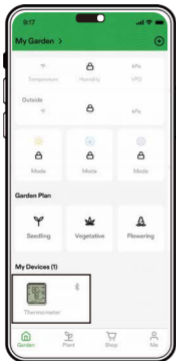
Step 5. Rename and finish Pairing

After pairing your device with VIVOSUN App, you can rename your device and check the temperature, humidity and data log on App.



OPERATION

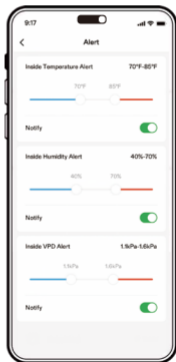
Step 5



OPERATION

Alert

Tap ⚡ to enter Alert page. You can set the temperature and humidity alert. You can also receive notification by opening Notify.



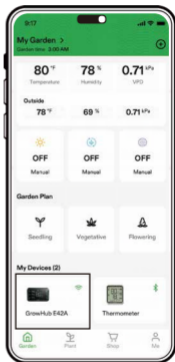
OPERATION

WiFi Gateway by GrowHub E42/E42A/E25

AeroLab THB1/THB1S can be added to GrowHub E42/E42A/E25 as sensor.
GrowHub E42/E42A/E25 can be WiFi Gateway to AeroLab at the same time so that you can check the data remotely.

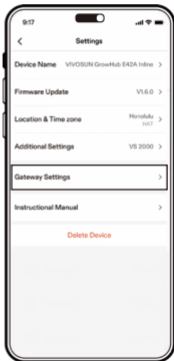
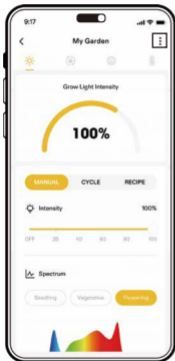
Step 1

Enter GrowHub E42/E42A/E25 page and go to Setting Page. Now you can see GrowHub E42/E42A/E25 Gateway Settings



OPERATION

Step 1



OPERATION

Step 2

Press pair sensor to see the sensors you can pair. Select the sensor you want to pair and finish. You can pair up to 6 sensors.



OPERATION

Step 2

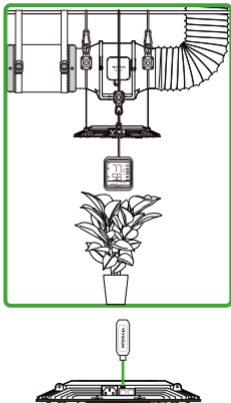


OPERATION

Combo with GrowHub E25

AeroLab THB1S can be combo with GrowHub E25. Pair AeroLab THB1S as a sensor to GrowHub E25. Then you can get a display and temperature/humidity sensor for GrowHub E25 and work with Vivosun AeroLight, AeroZesh and other VIVOSUN SGS device as you need. Just like a GrowHub E42/E42A.

Notice: Each device need one GrowHub E25.



COMPLETE YOUR SETUP

CONTROLLER

GrowHub E42/ E42A /E25

- WiFi remotely control with VIVOSUN App
- Complete control of lights, inline fans and circulation fans
- Temp. / Humidity monitoring and control
- Compatible with VIVOSUN devices like AeroLight, AeroZesh, VS series lights
- Professional controller designed for growers



COMPLETE YOUR SETUP

LED GROW LIGHT

AeroLight / VS / VSX / VSF

- 100W-645W powerful LED grow light
- High PPE efficacy with Samsung LED
- Full spectrum included FR / UV
- 0-100% dimming with daisy-chain
- ETL / CE / FCC certificated
- Compatible with GrowHub controller



COMPLETE YOUR SETUP

INLINE DUCT FAN

AeroZesh

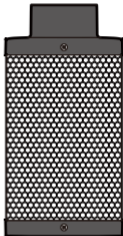
- Efficient air flow with high static pressure
- 4' / 6' / 8' for different size of tent
- Quiet EC motor and energy saving
- Dual ball bearings with long lifetime
- Precise fan speed adjustment by PWM
- Compatible with GrowHub controller with multiple professional operation modes



COMPLETE YOUR SETUP

CARBON FILTER

- Eliminate odors and refresh air in your tent
- Premium grade Australian charcoal
- High-efficiency absorption and a long lifespan
- Compatible with 4"/6"/8" inline fans



WARRANTY INFORMATION

WARRANTY TERMS

1. We offer a 2-year warranty against manufacturing defects for all of our products from the date of purchase. If you need warranty assistance, please contact us as soon as possible.
2. The warranty does not cover damage due to high moisture levels, water damage, power surges, improper hanging/mounting, improper use, dust build-up, or users' unauthorized modifications.
3. In the USA, if any AeroZesh duct fan ceases working within 30 days of use, you can choose:
 - (A) Exchange: We will email you a pre-paid return label. Please ship the product back to our USA warranty center and a replacement will be sent to you free of charge as soon as we receive the defective product.

WARRANTY INFORMATION

(B) Refund: We will email you a pre-paid return label. Please ship the product to our USA warranty center and we will issue a refund as soon as the product has been received. Refund periods may depend on the processing time of your bank or institution—usually, a refund takes about 5 business days to be processed.

4. Our company reserves all rights to the final explanation of this warranty structure. If you have any questions about our warranty policy, please contact us.

Designed by **VIVOSUN** in California.
Made in China