
GrowHub A22 with Temperature
& Humidity Sensor
User Manual



YIVOSUN

Welcome to **VIVOSUN**

At Vivosun, **quality** craftsmanship and innovation are at the core of every product we create. Should you require further support or wish to share any suggestions, **please** don't hesitate to contact us.

**Love
what
you
grow™**

Safety Information

Please read the following information carefully before using the product. Failure to follow these safety instructions may result in serious injury and will release Vivosun of all liability and void all product warranties.

1. Carefully review all instructions before installation and use.
2. Confirm that your power source matches the product's electrical specifications.
3. Do not connect devices that exceed the product's 120–240V AC, 1800W, 15A rating.
4. Check local code regulations for any additional safety requirements to ensure compliant installation.
5. Plug the product in securely and keep it out of reach of children.
6. If you are unsure about the installation process, consult a licensed professional. Improper installation may void the warranty.

Safety Information

7. Do not hardwire this product. Retrofitting may cause injury or damage and will void the warranty.
8. This product is intended for dry, indoor use only. Avoid using it in hazardous environments such as flammable, explosive, chemical-laden, or wet areas.
9. Avoid covering power cords with rugs or fabrics.
10. Do not insert fingers or foreign objects into any openings, as this can result in electric shock, fire, or damage. Do not block or tamper with the product during operation.
11. Discontinue use immediately if the product malfunctions, has been dropped, or shows any signs of damage.
12. Ensure the plug is fully inserted into the socket before use for added safety.
13. Do not disassemble the product, as this may cause damage or create safety hazards.

Key Features

GH-A22S



Easy Growing

Automatically control all your grow devices for an easy growing experience



SGS Compatible

Connect your favorite grow devices to the Vivosun app for unified control and remote monitoring.



Protected Growing

Act before it becomes a real problem. Receive notifications and alerts whenever parameters fall outside your desired range.



Wide Compatibility

A max load of 15A supports most grow devices.

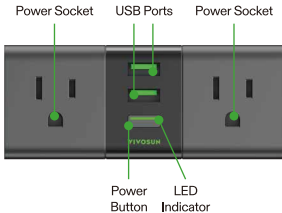
Product Contents

A22



Temperature & Humidity
Sensor Probe

Temperature &
Humidity Interface



Specifications

Input	100-120V ~ 60 Hz
Rated Current	15A MAX FOR GENERAL USE 10A MAX FOR HEATER
MAX Total Output Power	1800 W FOR RESISTIVE LOAD
Working Temperature	-20°C - 45°C (-4°F - 113°F)
USB Port	TOTAL 5V = 2A
Connectivity	IEEE 802.11 b/g/n, 2.4 GHz

LED Indicator

LED Indicator	Status
Fast Flashing White	Wi-Fi disconnected.
Solid White	Wi-Fi connected. Default Manual Mode on the Vivosun app.
Solid Green	Wi-Fi connected. Cycle/Auto/ Recipe Mode on the Vivosun app.
Alternating White & Green	Wi-Fi connected. Cycle/Auto/ Recipe Mode is changing to Manual Mode.
Slow Flashing Green/White	Offline

Notice:

1. The LED indicator light will turn off after 5 seconds of operation to protect the plants. If you need to check the LED indicator status, briefly press the Power Button to activate the LED indicator.
2. When the GrowHub A22 is offline, the LED indicator will continuously flash green/white slowly until it reconnects to the network.

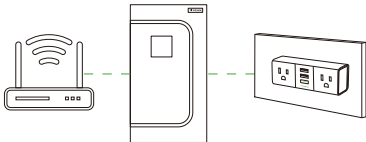
Installation & Connection

STEP 1

Plug the device into a mains outlet located outside the grow tent.

Notice:

1. Ensure the device is within 100 ft of the router.
2. Minimize obstructions (e.g. walls, windows) between the device and the router.



Installation & Connection


STEP 2

Connect GrowHub A22 to the Vivosun app

Step 2.1: Download the Vivosun app

Search "Vivosun" in the App Store or Google Play Store to download the Vivosun app.

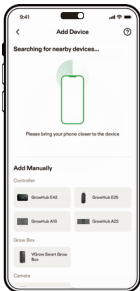
Step 2.2 Add GrowHub A22

Tap "+" or  to add GrowHub A22. When connecting to the Vivosun app, the LED indicator will flash white.

Note: Make sure you have a 2.4G WiFi connection and that Bluetooth is enabled on your phone.

Installation & Connection

STEP 2



Installation & Connection

STEP 2

Step 2.3 Name Your Device

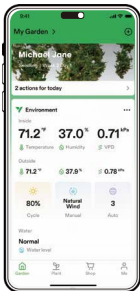
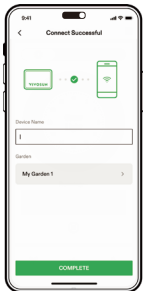
Once you've successfully connected your GrowHub, you can rename the device and start using it right away.

Note: You can either create a new Garden or add the GrowHub A22 to an existing one. It is fully compatible with the GrowHub Controllers E42, E42A, and E25.

All GrowHub Controllers in the same Garden will run the same recipe.

Installation & Connection

STEP 2



Operation

LOCAL FUNCTION	OPERATION	LED INDICATOR
Turn On/Off the device	Press the Power Button	White (Wi-Fi disconnected or Manual Mode)
Change Cycle/ Auto/Recipe Mode to Manual Mode	Press and hold the Power Button for 3 seconds	Alternating white & green when holding the button; Become solid white confirms a successful change to Manual Mode
Restore to factory settings	Press and hold the Power Button for 6 seconds	Fast flashing white after successfully restoring to factory settings

APP Control

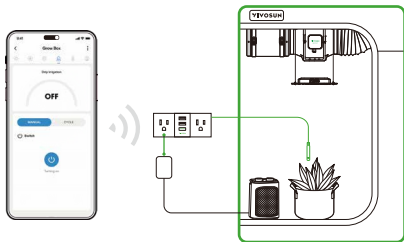
LED Indicator	Status
Remote On/Off	Turn On/Off the device on the Vivosun app
Timer Setting/Cycle	Turn On/Off the device at a set time
Auto Mode	Turn On/Off the device at a set temperature/humidity
Recipe* (Must work with other devices in the same garden)	Turn On/Off the device based on the stage/schedule/temperature/humidity

Notice:

Auto Mode requires a current temperature/humidity measurement. You can add GrowHub A22 to your garden to customize your own smart growing.

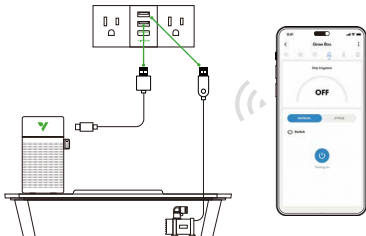
Usage Scenarios

1. Connect the light inside the tent to the smart socket; control via the app.



Usage Scenarios

2. Connect the drip irrigation system from the self-priming water basin to the adapter, then plug it into the smart socket; control via the app.



Warranty

Vivosun provides a one-year warranty against defects on GrowHub A22 purchased directly from us or through our authorized dealers. This policy serves as our commitment to promptly address any manufacturing defects or premature breakage that may occur during normal use of our products.

Our warranty covers the replacement or refund of purchases that exhibit material defects within one year of the original purchase date. In such events, customers may contact us to initiate the claim process. We will need proof of purchase to verify coverage eligibility.

This policy does not extend to products that have been misused, abused, or purposefully damaged. It also does not cover normal wear and tear or cosmetic defects such as minor scratches.

Customers can rest assured knowing that our products undergo rigorous quality testing procedures. This one-year warranty reflects our confidence in the durability of our products under normal use.



VIVOSUN
Made in China