

# VIVOSUN

Designed by **VIVOSUN** in California.  
Made in China



## Water Pump

USER MANUAL

# Love what you grow™

Welcome to **VIVOSUN**

Thank you for choosing VIVOSUN. We are committed to product quality and friendly customer service. If you have any questions or suggestions, please don't hesitate to contact us.

## INTRODUCTION

Our pumps undergo careful inspection and testing to ensure both safety and optimal performance. However, failing to follow the instructions and warnings in this manual may result in damage to the pump or serious injury. Please read this entire instruction manual thoroughly before operating the appliance, and keep it handy for future reference.

Key Safety Points:

- Completely submerge the pump in water before turning it on.
- Always unplug the pump before handling it.

### Warning

- Only connect the pump to the voltage specified on its rating label.
- Do not attempt to pump flammable liquids.
- The maximum operating depth of this pump is 1.5m.
- The power cord cannot be replaced. If the cord is damaged, the appliance should be scrapped immediately.
- To eliminate the risk of electric shock, do not immerse the plug in water or any other liquid.
- This appliance is not intended for use by persons (including children) with reduced physical, sensory or mental capabilities, or lack of experience and knowledge, unless they have been given supervision or instruction concerning the use of the appliance by a person responsible for their safety.

## INSTALLATION

Insert the suction cups or rubber feet into the proper housing in the impeller chamber and motor body, then completely submerge the pump to install.

## USE

The flow rate can be adjusted with the control valve; the pump will start operating as soon as you plug it in, and will stop operating as soon as you unplug it.

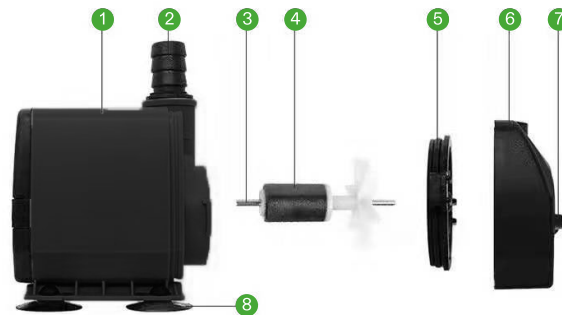
## CLEANING

Unplug and remove the impeller chamber to separate it from the motor body; take out the impeller and shaft. Then clean all parts with a soft brush. If there are any limestone deposits on any parts, soak them in vinegar for several hours to clean them. Next, reassemble all the parts according to the parts list on the following page; follow the instructions carefully so that the pump can be reassembled in the appropriate order.

## MAINTENANCE

With extended use over time, the plastic bearing, ceramic shaft, and shaft sleeve will naturally wear down. This can result in some ambient noise. When these parts become worn and noisy, they need replacement. To change them out: Unplug the pump's power cord. Open the impeller chamber. Remove each worn part. Replace with new plastic bearing, ceramic shaft, and/or shaft sleeve as needed.

## PARTS LIST



1	Pump Body	3	Shaft	5	Impeller Cover	7	Flow Control Valve
2	Nozzles x3 (13/16/19mm)	4	Rotor	6	Front Cover	8	Suction Cups x2

## CAUTION

- The pump should always be completely submerged in water.
- Do not let the pump run dry.
- Always disconnect from the electrical outlet before cleaning, performing maintenance, or handling the pump.
- Do not lift the pump by the power cord.
- Do not use the pump in liquids exceeding 35°C (95°F).
- Do not use in salt water.
- If the plug or receptacle gets wet, do not unplug the cord; instead, disconnect the fuse or circuit breaker that supplies power to the appliance and then unplug and examine the device for presence of water in the receptacle.

## PERFORMANCE

A clogged or dirty intake screen will greatly reduce performance.

If the pump is used on a dirty surface, raise it slightly to reduce the amount of debris in contact with the intake. If less flow is desired, adjust the regulator on the seal cover to restrict the flow.

Do not run the pump when it is not submerged in water as it may be damaged.

Always submerge the pump first and then plug it into an electrical outlet. The first time the pump is used, it may appear not to be functioning properly because there is still air within the pump. Do not worry - restart the device a few times by unplugging and plugging it in again until all air has been expelled and the unit is operating normally.

## IF PUMP STOPS WORKING

- Double-check the outlet being used, and try another outlet to ensure it is receiving power.



Always unplug the pump before handling it.

- Check the pump outlet and tubing for kinks and obstructions. Algae can block both, so use a garden hose to flush out any algae.
- Check the inlet to ensure it is not clogged with debris.
- Remove the pump inlet to access the impeller area. Turn the rotor to ensure it is not broken or jammed.
- Performing monthly maintenance on your pump will greatly prolong its lifespan.



Ensure that the power cord loops under the outlet to form a "Drip Loop".

This will prevent water from running down the cord and into the outlet.



### DISPOSAL

Do not dispose of this product as unsorted municipal waste. Such waste must be collected separately for special treatment.